



# T4 "TOP ENTRY" BALL SHUT-OFF VALVES



T4 "Top Entry" ball valves with lever



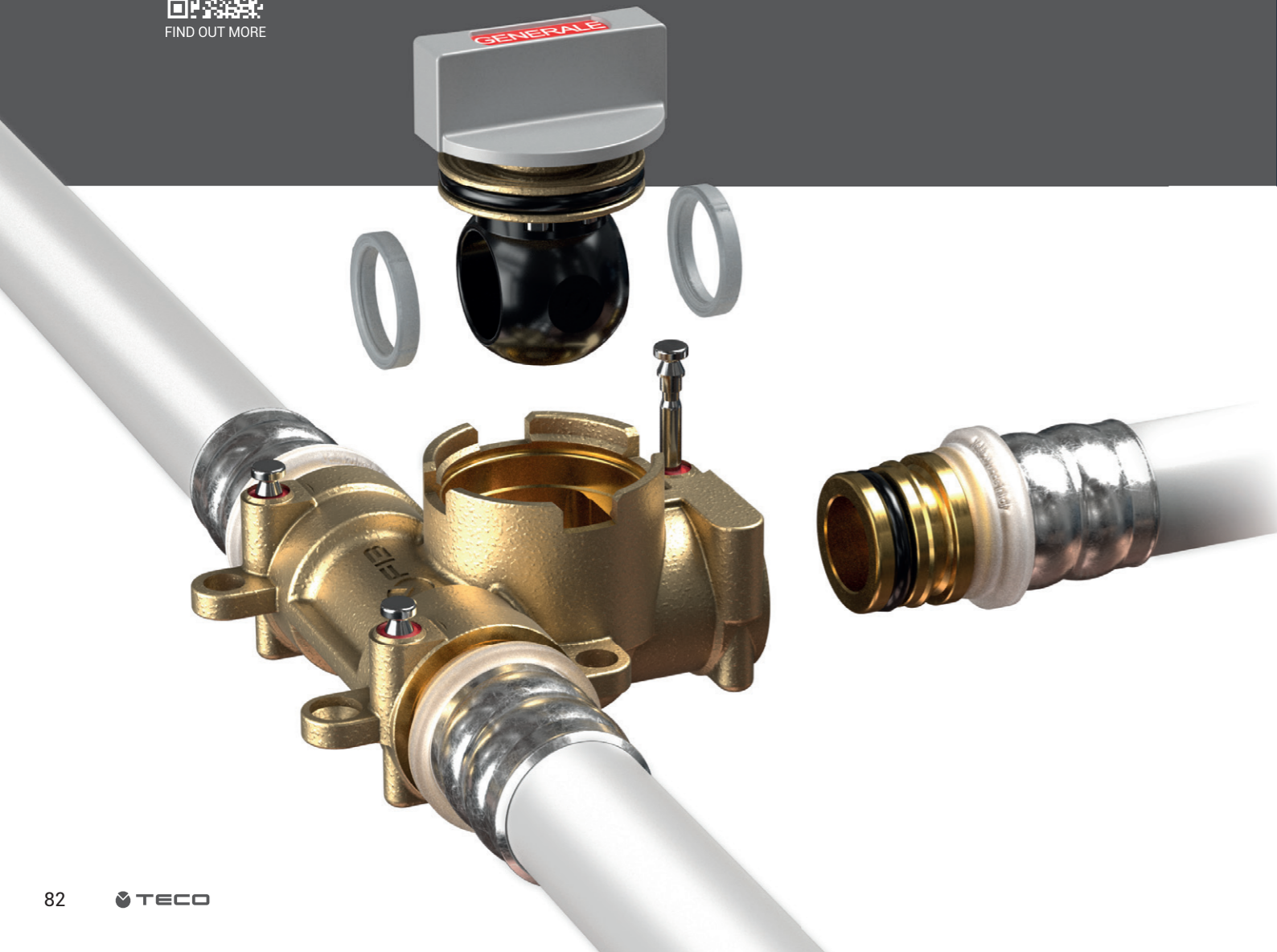
# "TOP ENTRY" BALL VALVE WITH OPTIONAL MOTOR

## T4E

READY FOR EASY MOTOR INSTALLATION  
"SOFT TURN" ANTI-JAMMING TECHNOLOGY  
"TOP ENTRY" REMOVABLE BALL  
COMPACT



FIND OUT MORE



BALL VALVES

### APPLICATIONS

- For hot and cold drinking water.
- For cooling and heating water with or without antifreeze.
- HVAC systems.
- Compressed air systems.
- Vacuum packing.

### TECHNICAL DATA

Temperature	+5 °C ÷ +95 °C
Pressure	PN 10 (10 bar)
Connections	Fastec EN 10226-1 R/Rp thread
Reference standards	DIN EN 13828 W570-1 KTW-BWGL ACS PZH



### FEATURES OF VALVES WITH OPTIONAL MOTORS

- **"Soft Turn"** anti-jamming valves ensure jam-free operation even after long periods of inactivity without the need for periodic activation.
- Full flow valve, with **"Top Entry"** removable ball.
- **Extremely compact dimensions.** Ideal for installations in tight spaces.
- Different connection types: **FASTEC®** and threaded.

### ACTUATOR FEATURES

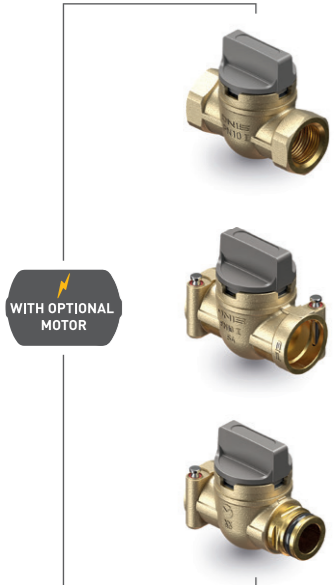
- **€100 ON/OFF electric actuator** can be applied to ball valves with **"Top Entry"** and **"Soft Turn"** anti-jamming technology.
- **Simple installation** with the **Snap Fit** system.
- **Auxiliary microswitch** to indicate the valve open and closed positions (zone valve).
- Quick actuator electrical connection thanks to the **Molex Micro-Fit connector**.
- **Stepper motor** that is quiet and reliable with low energy consumption.
- 4 installation positions.



"TOP ENTRY" BALL VALVE WITH OPTIONAL MOTOR



T4 € "Top Entry" STRAIGHT ball valve with optional motor



**Includes:**

- 1 "Top Entry" ball valve with removable ball and "Soft Turn"
- Control handle

**Does not include:**

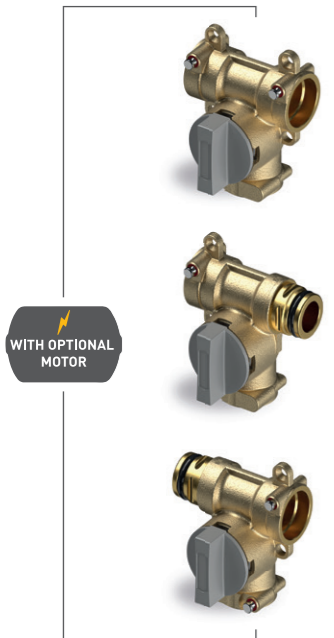
- €100 electric actuator (opposite page)
- Fastec fittings (page 86)

Code	DN	Connections	Kv*	Pack
		Threaded		
T4P3211100	DN15	Rp 1/2" F / F	15	5
T4P4211100	DN20	Rp 3/4" F / F	27	5
<b>FASTEC®</b>				
T4P3271100	DN15	F13 F / F	15	10
T4P4271100	DN20	F14 F / F	27	10
T4P3272100	DN15	F13 F / M	15	10

[See page 86](#)

\* The coefficient Kv defines the water flow (in m<sup>3</sup>/h from 5 °C to 40 °C) through a valve with a differential pressure of 1 bar.

T4 € "Top Entry" ball valve, Fastec® "T" version



**Includes:**

- 1 "Top Entry" ball valve with removable ball and "Soft Turn"
- Control handle

**Does not include:**

- €100 electric actuator (opposite page)
- Fastec fittings (page 86)

Code	DN	Connections	Kv*	Pack
		FASTEC®		
T4P32C1100	DN15	F13 F / F / F	5.8	10
T4P32C2100	DN15	F13 F / F / M	5.8	10
T4P32C3100	DN15	F13 M / F / F	5.8	10

[See page 86](#)

\* The coefficient Kv defines the water flow (in m<sup>3</sup>/h from 5 °C to 40 °C) through a valve with a differential pressure of 1 bar.

Spare parts for T4 €, straight and T version with optional motor

See page 171 or visit the website for all product information.



€100 ON/OFF electric actuator



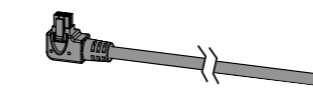
**Includes:**

- €100 ON/OFF electric actuator
- 1.25 m cable with Molex Micro-Fit connector

Code	Voltage	Auxiliary microswitch position	Pack
E1045100	AC 110 – 230 V	With valve closed	1
E1046100	AC/DC 24 V		

Code	Voltage	Auxiliary microswitch position	Pack
E1042100	AC 110 – 230 V	With valve open (zone valve)	1
E1044100	AC/DC 24 V		

Optional 3 metre cable for €100 electric actuator

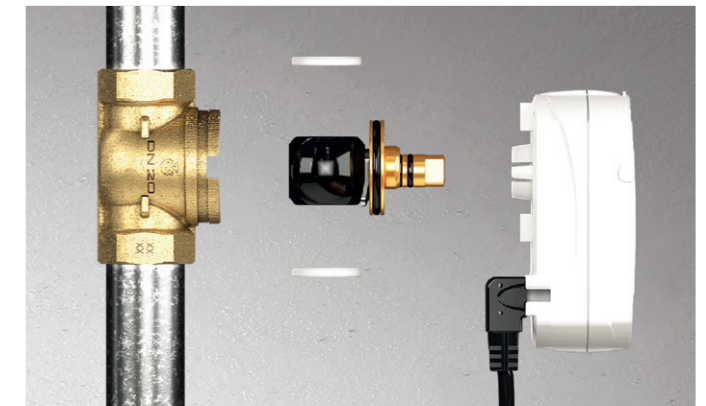


Code	Description	Pack
KA00K00014	Kit of 6P X 3M cable + Micro-Fit connector	1

"Soft Turn" anti-jamming valve

MAXIMUM CONTROL

"Top Entry" ball valves with optional motor and removable ball have "Soft Turn" anti-jamming technology to ensure jam-free operation even after long periods of inactivity without the need for periodic activation. The combination of the engineered polymer valve ball and specially designed seals prevents jamming.



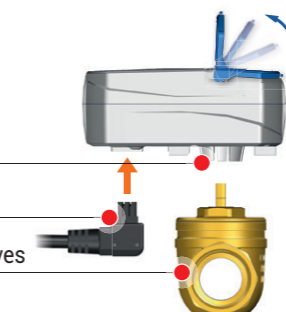
Easy to install

SNAP-FIT ASSEMBLY/REMOVAL

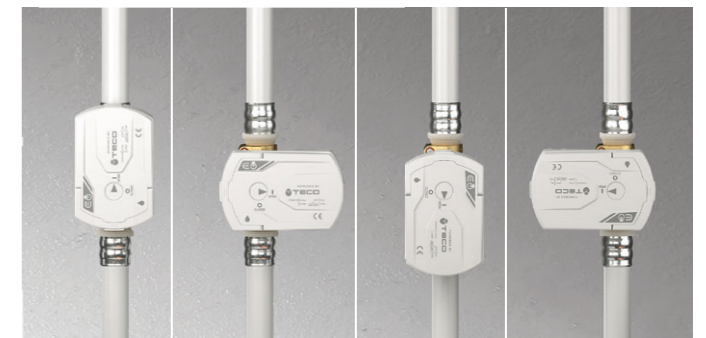
Valve seat

Molex Micro-Fit connector

Compatible "Top Entry" series ball valves



Can be installed in 4 positions



**FASTEC ADAPTERS AND FITTINGS**  
FOR "TOP ENTRY" BALL VALVE WITH OPTIONAL MOTOR



**Fastec adapters and fittings for T4 € valve**

**Fastec Fittings**

Code	Description	Pack
RF12210200	F13 90° F/F	10
RF22220200	F14 90° F/F	10
RF12210100	F13 90° M/F	10
RF22220100	F14 90° M/F	10
RF12310200	F13 T F/F/F	5
RF22320200	F14 T F/F/F	5
RF12310100	F13 T M/F/F	5
RF22320100	F14 T M/F/F	5
RF12110200	Sleeve F13 F/F	10
RF22120100	Sleeve F14 F/F	10
KA00K00008	F13 Nipple M/M	10
KA00K00017	F14 Nipple M/M	10
KA00F10001	Dual joint Twin F13 F/F/M	5
KA00K00016	F13 Plug F	10
KA00K00018	F14 Plug F	10
KA00K00002	F13 Plug M	20
KA00K00010	F14 Plug M	10
RF12101100	Reducer from F14 F → F13 M	10
RF12110400	F13 M L. 25 mm	10
RF12110500	F13 M L. 50 mm	10
RF12110600	F13 M L. 75 mm	8

**Threaded fittings**

Code	Description	Pack
KA00K00003	F13 M x R 1/2"	10
KA00K00013	F13 M x R 3/4"	10
KA00K00009	F14 M x R 3/4"	10
KA00K00019	F14 M x R 1"	10
RF12101000	F13 M x Rp 1/2"	10
RF12111000	F13 M x Rp 3/4"	10
RF12120100	F14 M x Rp 3/4"	10
RF12120200	F14 M x Rp 1"	10
KA00K00004	EUROKONUS F13 M x EK 3/4"	10
RF122F0100	F13 M 90° x R 1/2"	10
RF122F0200	F13 M 90° x Rp 1/2"	10
RF12110900	SWIVEL NUT FLAT SEAL WITH O-RING F13 M x G 3/4"	10

R (male) and Rp (female) threaded connections in accordance with EN 10226-1 and G threaded connections in accordance with ISO 228-1.

**Fittings for PEX pipes**

Code	Pipe Ø x Thickness	Pack
RF12100100	F13 M 16 x 1.8	10
RF12100200	F13 M 20 x 1.5	10
RF12100300	F13 M 25 x 2.3	5
RF13M1210301	F13 M 12 x 1.1	10
RF13M1610301	F13 M 16 x 1.5	10
RF13M2010301	F13 M 20 x 1.9	10
RF13M1210401	F13 M 12 x 1.1	10
RF13M1610401	F13 M 16 x 1.5	10
RF13M2010401	F13 M 20 x 1.9	10



**Fittings for multi-layer pipes**

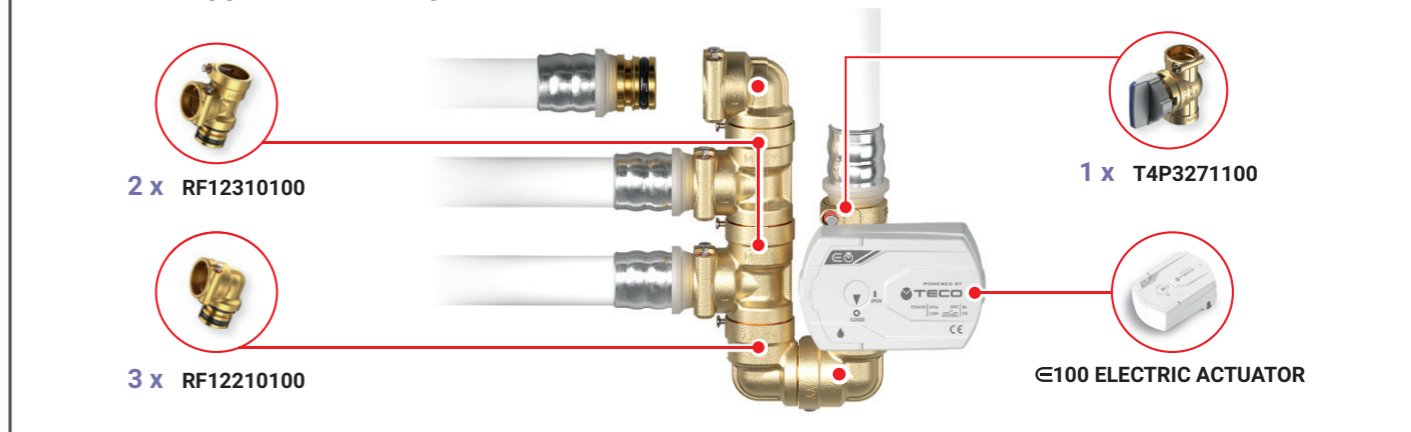
Code	Pipe Ø x Thickness	Pack	Code	Pipe Ø x Thickness	Pack
RF13M16101VA	F13 M 16 x 2.0	10	511115MP	F13 M 16 x 2.0	5
RF13M16102VA	F13 M 16 x 2.25	10	511116MP	F13 M 16 x 2.25	5
RF13M20101VA	F13 M 20 x 2.0	10	511118MP	F13 M 20 x 2.0	5
RF13M20102VA	F13 M 20 x 2.5	10	511119MP	F13 M 20 x 2.25	5
RF13M26101VA	F13 M 26 x 3.0	5	511120MP	F13 M 20 x 2.5	5
RF14M26101VA	F14 M 26 x 3.0	5	511121MP	F13 M 25 x 2.5	5
RF14M32101VA	F14 M 32 x 3.0	5	511122MP	F13 M 26 x 3.0	5
1651039	F13 M 16 x 2.0	10	39342	F13 M 16 x 2.0	10
1651040	F13 M 20 x 2.0	10	39344	F13 M 20 x 2.0	10
1651041	F13 M 26 x 3.0	5			



**F13 Fittings with FASTEC connection available in manufacturers' catalogues**

<b>COMISA</b> COMISA PRESS Pipe Ø 16-20	<b>HENCO</b> Pipe Ø 16-20-26	<b>APE</b> raccorderie AP SERIES Pipe Ø 16-20-26	<b>+GF+</b> ALUPEX EXPRESS Pipe Ø 16-20	<b>JRG SANIPEX MT</b> Pipe Ø 16-20	<b>TECE</b> LOGO Pipe Ø 20	<b>FLEX</b> Pipe Ø 16-20-25
---	---------------------------------	--	---	---------------------------------------	----------------------------------	--------------------------------

**Fastec application examples**

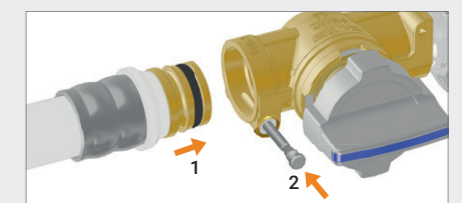


**FASTEC® THE FAST AND SECURE PLUMBING CONNECTION**

Plumbing connection with pin locking (page 6).

**F13** DN 15 Equivalent to 1/2"

**F14** DN 20 Equivalent to 3/4"



1. Insert the fitting with the pin raised.
2. Lower the locking pin to complete the connection.



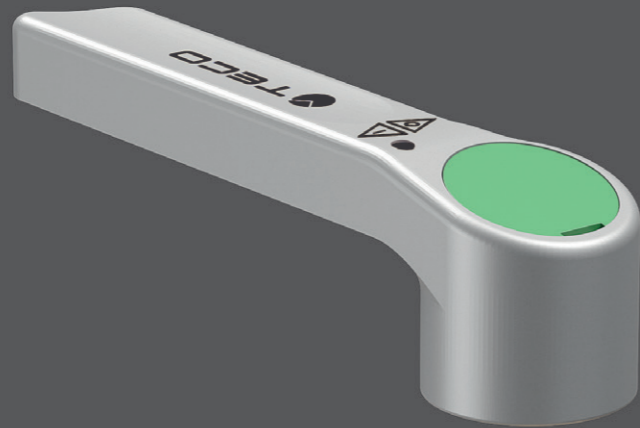
# "TOP ENTRY" BALL VALVE FOR PLASTIC PIPES

## T4 MULTI-CLAMP - T4 PP-R

"SOFT TURN" ANTI-JAMMING TECHNOLOGY  
 "TOP ENTRY" REMOVABLE BALL  
 SINGLE-PIECE BODY



FIND OUT MORE



T4 PP-R



T4 MULTI-CLAMP

### APPLICATIONS

- For hot and cold drinking water.
- For cooling and heating water with or without antifreeze.
- For compressed air.
- Vacuum packing.

### TECHNICAL DATA

Temperature	Multi-clamp version +5 °C ÷ +95 °C PP-R version +70 °C
Pressure	PN 10 (10 bar)
Connections	Multi-clamp (multi-layer pipes) PP-R (PP-R pipes)
Reference standards	DIN EN 13828 W570-1 KTW-BWGL ACS PZH

### FEATURES

- **Water shut-off valves for plastic pipes.**
- **"Soft Turn" anti-jamming technology** to ensure jam-free operation even after long periods of inactivity without the need for periodic activation.
- **"Top Entry"**: ball and seals can be replaced after the valve has been installed.
- T4 multi-clamp with single-piece body and integrated connections for Ø16, Ø20, Ø26 and Ø32 multi-layer pipe.
- T4 PP-R with single-piece body and integrated connections for Ø20, Ø25, and Ø32 PP-R pipe.





T4 "TOP ENTRY" BALL VALVE FOR PLASTIC PIPES



T4 MULTI-CLAMPS version for multi-layer pipes

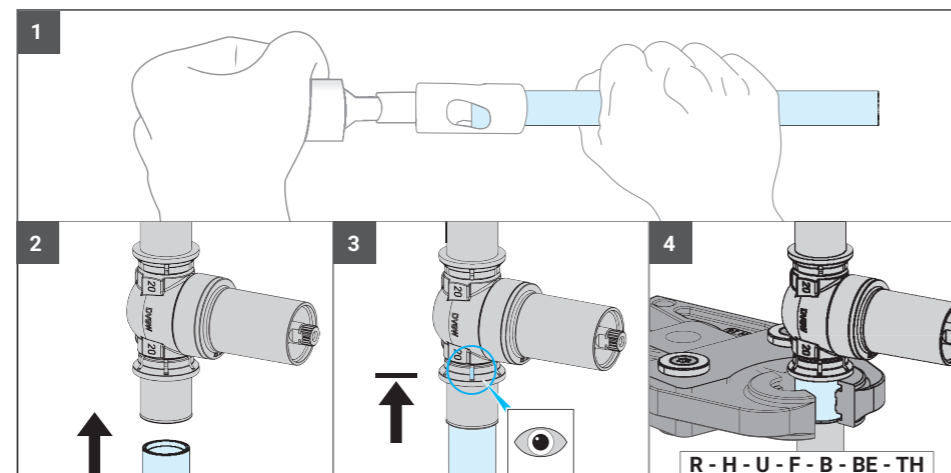
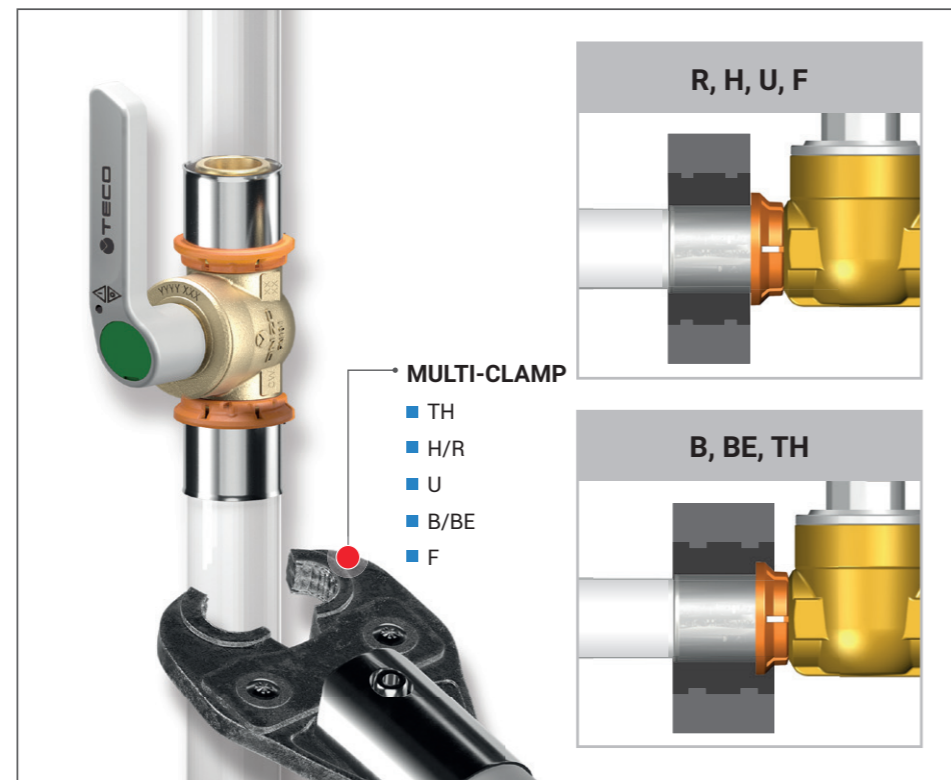


NEW

Includes:

- 1 valve with removable ball and connections for multi-layer pipe
- Control lever

Code	DN	Connections	Pack
		Pipe Ø x Thickness	
T4P0CB01100	DN8	16 x 2	20
T4P3CB01100	DN15	20 x 2	20
T4P3CB02100	DN15	26 x 3	20
T4P4CB01100	DN20	32 x 3	15



T4 PP-R straight valve for PP-R pipes



NEW

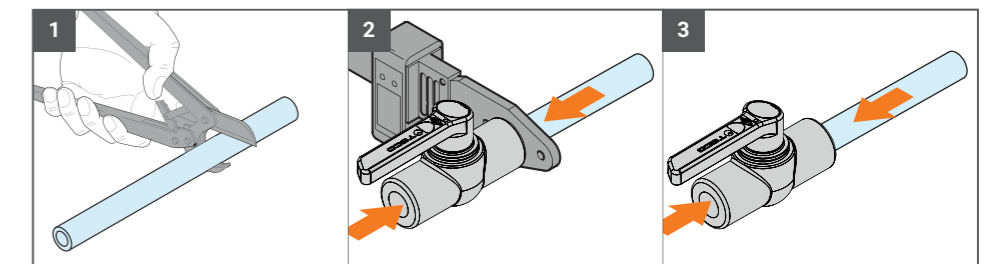
Includes:

- 1 valve with removable ball and connections for PP-R pipe
- Control lever

Code	DN	Colour	Connections	Pack
			PP-R	
T403983V00	DN15	●	Ø20	20
T403982V00	DN15	●	Ø25	20
T404981V00	DN20	●	Ø32	20

**i** Other colours available on request.

THE "TOP ENTRY" PP-R SERIES OF VALVES IS COMPATIBLE WITH ALL PP-R PIPES (Polypropylene Random Copolymer) MANUFACTURED IN ACCORDANCE WITH THE EN ISO 15874 STANDARD



To make the connections quickly and correctly, it is essential to use tools that comply with the DVS2207 standards. The welding procedure must comply with the DVS2207-2208 joint standards.

Spare parts for T4 MULTI-CLAMP and T4 PP-R

See page 172 or visit the website for all product information.





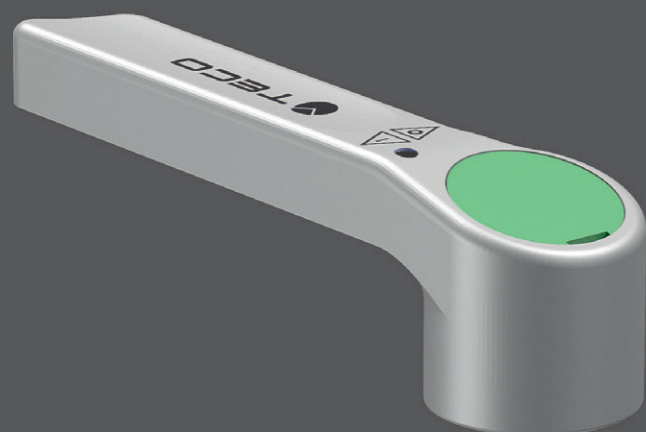
# "TOP ENTRY" UNIVERSAL BALL SHUT-OFF VALVES

## T4 - T4J

"TOP ENTRY" REMOVABLE BALL  
SINGLE-PIECE BODY



FIND OUT MORE



### APPLICATIONS

- For hot and cold drinking water.
- For heating systems.
- For compressed air systems.
- Suitable for non-aggressive fluids.
- Vacuum packing.

### FEATURES

- **Universal ball shut-off valves.**
- **"Top Entry"**: ball and seals can be replaced after the valve has been installed.
- **Full-flow ball**, DN 15–50.
- Single-piece body for high strength.
- Sandblasted chrome finish.

### TECHNICAL DATA

Temperature	+5 °C ÷ +95 °C
Pressure	DN15-20 PN 40 (40 bar)
	DN25-32 PN 32 (32 bar)
	DN40-50 PN 25 (25 bar)
Connections	EN 10226-1 R/Rp thread
Reference standards	DIN EN 13828
	W570-1
	KTW-BWGL
	ACS PZH





"TOP ENTRY" UNIVERSAL BALL SHUT-OFF VALVES

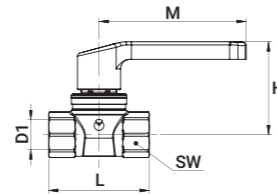


T4 "Top Entry" shut-off valve, straight F/F threaded version with control lever



**Includes:**

- 1 valve with removable ball
- Control lever



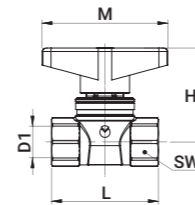
Code	DN	Connections	L	H	M	SW	Pack
		D1					
T4040300	DN15	Rp 1/2"	63	58	92	27	50
T4040400	DN20	Rp 3/4"	73	61	92	32	40
T4040500	DN25	Rp 1"	83	71	124	41	20
T4040600	DN32	Rp 1 1/4"	100	76	124	50	15
T4040700	DN40	Rp 1 1/2"	110	82	147	55	10
T4040800	DN50	Rp 2"	131	88	147	70	5

T4 "Top Entry" shut-off valve, straight F/F threaded version with control handle



**Includes:**

- 1 valve with removable ball
- Control handle



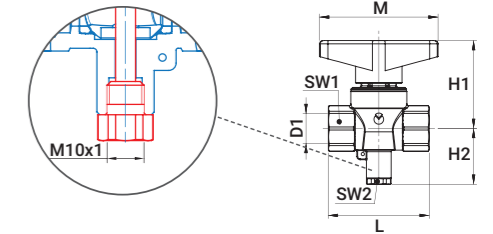
Code	DN	Connections	L	H	M	SW	Pack
		D1					
T4041300	DN15	Rp 1/2"	63	55	74	27	50
T4041400	DN20	Rp 3/4"	73	58	74	32	40

T4J "Top Entry" valve with probe connection, F/F threaded version for metering systems



**Includes:**

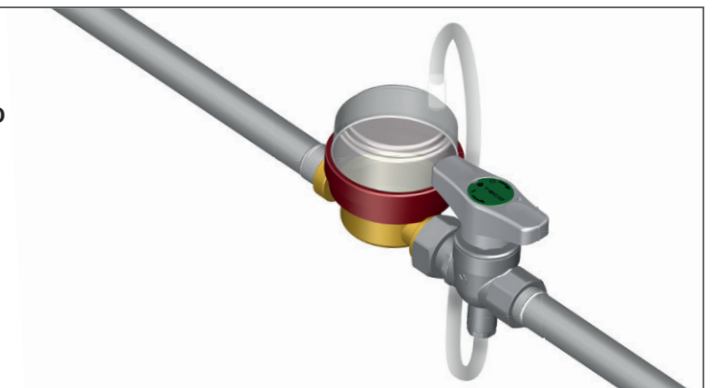
- 1 valve with removable ball
- Control handle



Code	DN	Connections	L	H1	H2	M	SW1	SW2	Pack
		D1							
T40413J0	DN15	Rp 1/2"	63	55	32.5	74	27	14	45
T40414J0	DN20	Rp 3/4"	73	58	32.5	74	32	14	35
T40415J0	DN25	Rp 1"	88	69	35	95	41	14	20

**T4J**  
INSTALLATIONS AND APPLICATIONS

Metering systems



Spare parts for T4 and T4J

See page 170 or visit the website for all product information.





# ELECTRIC ACTUATOR FOR BALL VALVES WITH OPTIONAL MOTOR

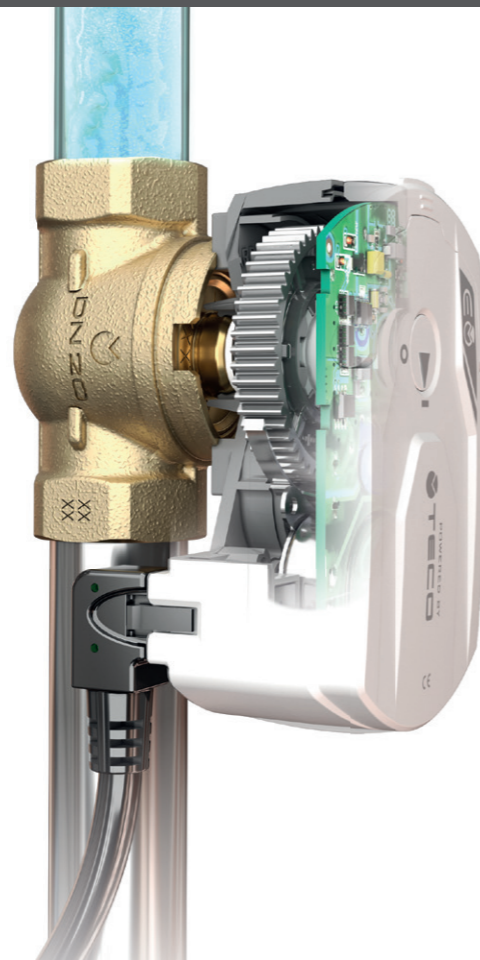
## €100

FLUSH-MOUNTING  
EASY TO INSTALL



FIND OUT MORE

€100 ELECTRIC ACTUATOR  
Application with T4 € valve outside the wall



€100 ELECTRIC ACTUATOR  
Flush-mounting valve application

ACTUATOR

### APPLICATIONS

- For home automation systems and automation on TECO motorised valves with "Top Entry" and "Soft Turn" technology.

Patented

### ACTUATOR FEATURES

- €100 ON/OFF electric actuator applicable to "Top Entry" ball valves with "Soft Turn" anti-jamming technology.
- Simple installation with the Snap Fit system.
- Auxiliary microswitch to indicate the valve open and closed positions (zone valve).
- Quick actuator electrical connection thanks to the Molex Micro-Fit connector.
- Stepper motor that is quiet and reliable with low energy consumption.
- 4 installation positions.

### FEATURES OF VALVES WITH OPTIONAL MOTORS

- "Soft Turn" anti-jamming valves ensure jam-free operation even after long periods of inactivity without the need for periodic activation.
- Full flow valve, with "Top Entry" removable ball.
- Extremely compact dimensions. Ideal for installation in tight spaces and concealed in walls with a minimum thickness of 100 mm.



**€100 ON/OFF ELECTRIC ACTUATOR**  
FOR BALL VALVES WITH OPTIONAL MOTOR





**€100 ON/OFF electric actuator**



**Includes:**

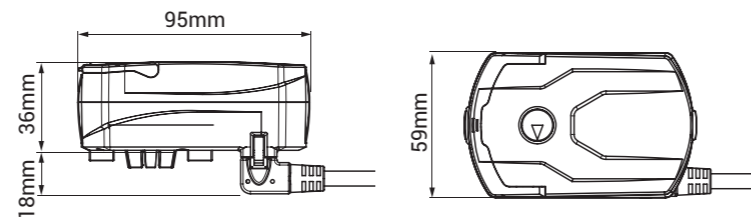
- €100 ON/OFF electric actuator
- 1.25 m cable with Molex Micro-Fit connector

Code	Voltage	Auxiliary microswitch position	Pack
 E1045100	AC 110 – 230 V	With valve closed	1
E1046100	AC/DC 24 V		

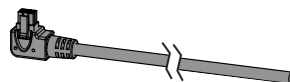
Code	Voltage	Auxiliary microswitch position	Pack
 E1042100	AC 110 – 230 V	With valve open (zone valve)	1
E1044100	AC/DC 24 V		

**TECHNICAL DATA**

Control	ON/OFF
Power supply	AC 110 – 230 V AC/DC 24 V
Power supply frequency	50/60 Hz
Consumption during operation	2.3 W
Consumption during hold	0.9 W
Auxiliary microswitch	Switching with valve closed Switching with valve open
Connection and power supply	1.25 m - 6-pole cable Molex Micro-Fit connector or compatible
Actuation time	24s / 90°
Noise level	37 dB
Certification	IEC/EN 60730
Ambient Temperature	-30 °C ÷ 50 °C (max. humidity 95%)



**Optional 3 metre cable for €100 electric actuator**



Code	Description	Pack
KA00K00014	Kit of 6P X 3M cable + Micro-Fit connector	1

**€100 products with optional electric actuator motor**

**"Top Entry" ball valves with optional motor**

See page 82



**T4€**

**Compact flush-mounting metering kit**

See page 21



**K4€**

Valve with optional €100 electric actuator motor.

**Flush-mounting meter kit with shut-off valve for optional motor**

See page 40



**K4CC MONO**

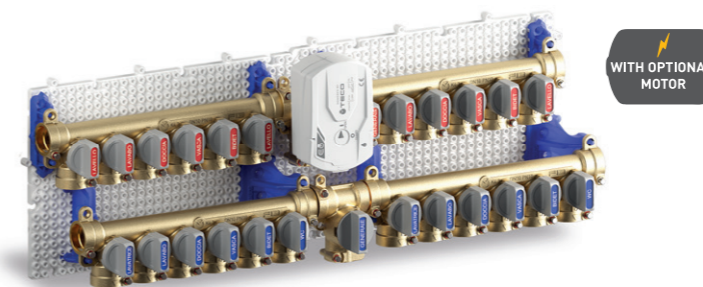
Flush-mounting metering kit with single volumetric meter or joint.

**K4CC DUO**

Flush-mounting metering kit with two volumetric meters or joints.

**Modular compact distribution system**

See page 48



**K-BLOC**  
MODULAR SYSTEM

Modular compact distribution system.



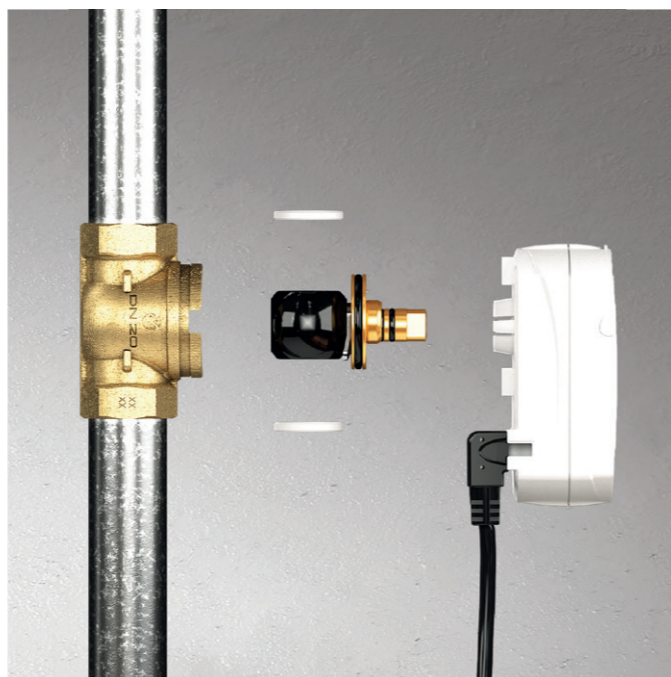
€100 ON/OFF ELECTRIC ACTUATOR FOR BALL VALVES WITH OPTIONAL MOTOR



"Soft Turn" anti-jamming valve

MAXIMUM CONTROL

"Top Entry" ball valves with optional motor and removable ball have "Soft Turn" anti-jamming technology to ensure jam-free operation even after long periods of inactivity without the need for periodic activation. The combination of the engineered polymer valve ball and specially designed seals prevents jamming.



compact

The TECO €100 series motor is optimised in terms of size and performance.

It is an extremely compact, energy-efficient, quiet, reliable motor that exploits the "Top Entry" valve with anti-jamming technology.

Ideal for installations in tight spaces.

Its compact size also makes it perfect for integration into the TECO K4 series flush-mounting modular systems (page 16).

Suitable for use in plasterboard/masonry walls. **Minimum thickness 100 mm**



Easy to install

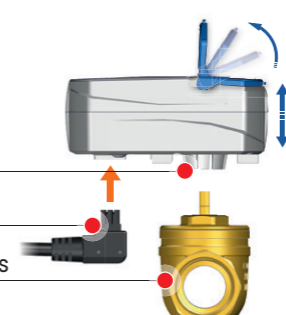
Once the mains connection is set up and the **Molex Micro-Fit** connector is plugged into the motor, it can be mounted by hand using the **Snap-Fit** connection.

SNAP-FIT ASSEMBLY/REMOVAL

Valve seat

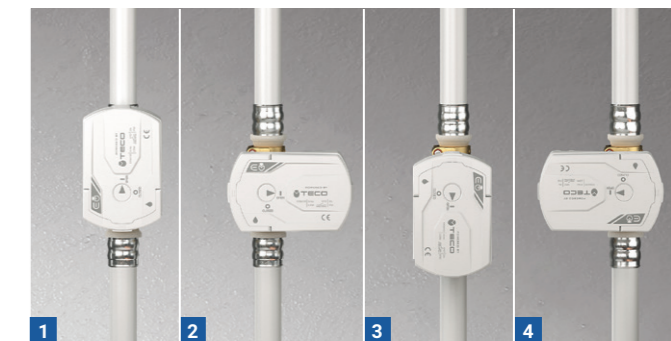
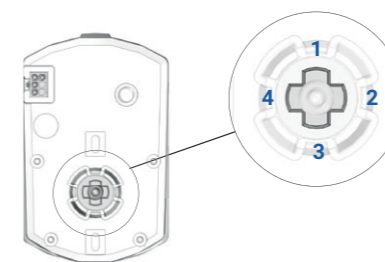
Molex Micro-Fit connector

Compatible "Top Entry" series ball valves



Can be installed in 4 positions

There is a choice of four mounting positions, making it an excellent solution for installation in tight spaces.



Auxiliary microswitch

All valves with optional motors are equipped as standard with auxiliary microswitches that can be configured to be activated when the valve is either closed or open, as desired.

The auxiliary microswitch detects when the valve is actually closed: ideal for plumbing or irrigation systems that require feedback to confirm closure.

Zone valve for heating system. The auxiliary microswitch activates the energy generator when the valve is fully open.

ELECTRICAL CONNECTIONS

The **Molex Micro-Fit JR 6-pin** connector allows connection to an external control. All versions are available with a two-pole auxiliary microswitch.

**Two-pole three-wire actuator connections:** energising contacts 1 (neutral) and 5 (phase) closes the valve (no flow); energising contacts 1 (neutral) and 5 + 6 (phase) opens the valve, allowing the medium to flow.

The microswitch contacts are independent of the valve electrical circuit.

**Microswitch signal output:** contact 2 (red) common - contact 4 (white) normally open - contact 3 (yellow) normally closed.

