

FLUSH-MOUNTING METER KIT WITH SHUT-OFF VALVES

K4CC

- COMPACT
- PRACTICAL TO INSTALL
- "SOFT TURN" ANTI-JAMMING TECHNOLOGY
- "TOP ENTRY" REMOVABLE BALL

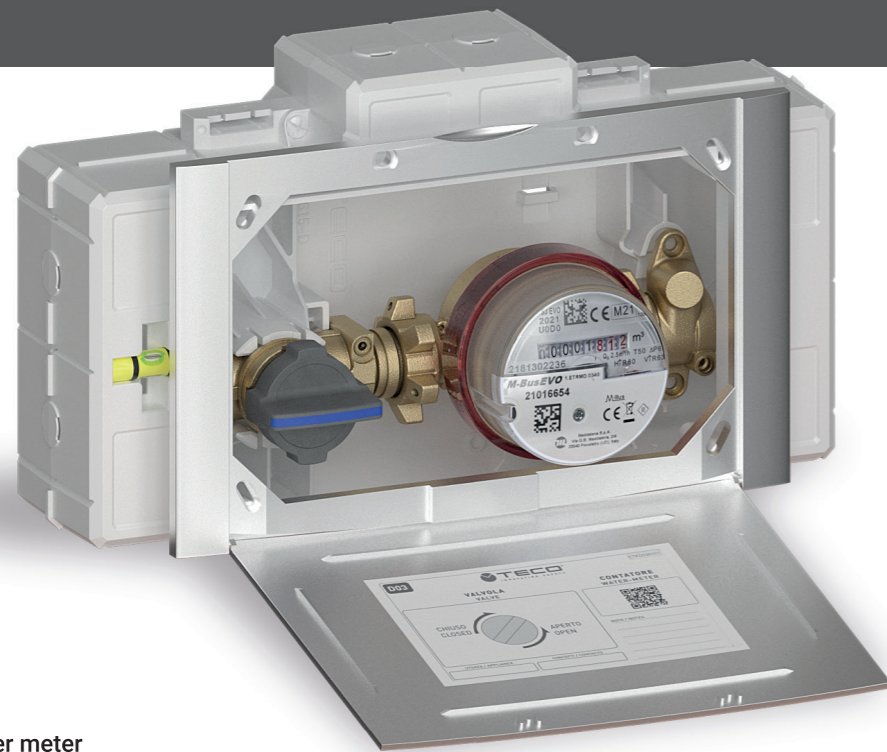


FIND OUT MORE



K4CC "DUO"
With double meter and €100 electric actuator

WITH OPTIONAL MOTOR



K4CC "MONO"
With single water meter

APPLICATIONS

- For hot and cold drinking water.
- For measuring and monitoring submetering consumption.
- Suitable for installation in masonry and plasterboard constructions (minimum thickness 100 mm).

TECHNICAL DATA

Temperature	+5 °C ÷ +90 °C
Pressure	PN 10 (10 bar)
Connections	Fastec
	DIN EN 13828 W570-1
Reference standards	KTW-BWGL ACS PZH

FEATURES

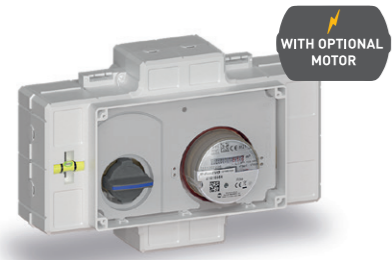
- Flush-mounting metering kit with shut-off valves.
- DN15 "Top Entry" valve with full flow, removable ball and "Soft Turn" anti-jamming technology, even after long periods of inactivity without the need for periodic activation.
- Valve with optional €100 electric actuator.
- For volumetric meters, Q_3 2.5 m³/h max.
- Pre-assembled in a serviceable sandwich box with knock-outs on all four sides.
- Design faceplate with magnetic closure, available in a range of finishes.
- Plumbing connection with FASTEC® quick coupling
- Available with one or two pre-assembled volumetric meters, or alternatively with connection joint.
- Radio or cable communication modules (M-BUS or LoRaWan) available for remote metering.



K4CC FLUSH-MOUNTED METER KIT WITH SHUT-OFF VALVES



K4CC "MONO" flush-mounting metering kit with single volumetric meter



Includes:

- 1 valve with removable ball and control lever for optional motor
- **Non-return valve in the outlet fitting**
- Box 280 x 186 x 69 mm
- Volumetric meter, Q₃ 2.5 m³ / h
- Fixing bracket
- Site protection cover

Does not include:

- Cover flap **D03** (see below)
- Fastec fittings (page 44)
- €100 electric actuator (page 46)
- Communication modules (page 47)

Kit code	DN	Connections	Meter	Pack
		FASTEC®		
K4CCDF10100	DN15	F13	Q ₃ m ³ / h. 2,5 - L. 80	5

[See page 44](#)

- i** • Optionally available with EVO M-Bus wireless radio meter module.
• Versions without non-return valve available on request.

K4CC "DUO" flush-mounting metering kit with two volumetric meters



Includes:

- 2 valves with removable ball and control knob for optional motor
- **Non-return valves in the outlet fittings**
- Box 310 x 210 x 85 mm
- 2 meters, Q₃ 2.5 m³ / h
- Fixing bracket
- Site protection cover

Does not include:

- Cover flap **E03** (see below)
- Fastec fittings (page 44)
- €100 electric actuator (page 46)
- Communication modules (page 47)

Kit code	DN	Connections	Meter (x2)	Pack
		FASTEC®		
K4CCEF10100	DN15	F13	Q ₃ m ³ / h. 2,5 - L. 80	5

[See page 44](#)

- i** • Optionally available with EVO M-Bus wireless radio meter module.
• Versions without non-return valve available on request.

K4CC "MONO" flush-mounting metering kit with joint



Includes:

- 1 valve with removable ball and control lever for optional motor
- **Non-return valve in the outlet fitting**
- Box 280 x 186 x 69 mm
- Joint L. 80 mm
- Fixing bracket
- Site protection cover

Does not include:

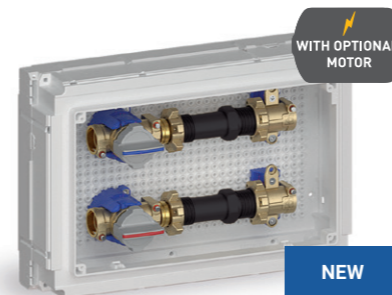
- Cover flap **D03** (see below)
- Fastec fittings (page 44)
- €100 electric actuator (page 46)

Kit code	DN	Connections	Joint	Pack
		FASTEC®		
K4CCDF10200	DN15	F13	Ø3/4" - L. 80 mm	5

[See page 44](#)

- i** Versions without non-return valve available on request.

K4CC "DUO" flush-mounting metering kit with joints



Includes:

- 2 valves with removable ball and control knob for optional motor
- **Non-return valves in the outlet fittings**
- Box 310 x 210 x 85 mm
- Joints L. 80/110 mm
- Fixing bracket
- Site protection cover

Does not include:

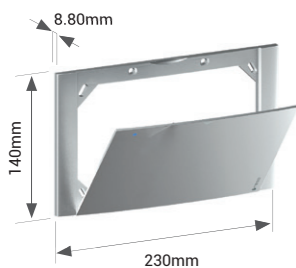
- Cover flap **E03** (see below)
- Fastec fittings (page 44)
- €100 electric actuator (page 46)

Kit code	DN	Connections	Joint (x2)	Pack
		FASTEC®		
K4CCEF10200	DN15	F13	Ø3/4" - L. 80 mm	5
K4CCEF10300	DN15	F13	Ø3/4" - L. 110 mm	5

[See page 44](#)

- i** Versions without non-return valve available on request.

D03 Faceplate with magnetic closure for K4CC "MONO"



Includes:

- Fixing screws

Code	Finish	Pack
KPLD0301600	White	5
KPLD0301M00	Polished chrome	1
KPLD0301800	Silver	1
KPLD0301A00	Black Soft Touch	1

E03 Faceplate with magnetic closure for K4CC "DUO"



Includes:

- Fixing screws

Code	Finish	Pack
KPLE0301600	White	5
KPLE0301M00	Polished chrome	1
KPLE0301800	Silver	1
KPLE0301A00	Black Soft Touch	1

FASTEC ADAPTERS AND FITTINGS
FOR K4CC FLUSH-MOUNTED METER KIT WITH SHUT-OFF VALVES



Fastec adapters and fittings for K4CC "MONO" and K4CC "DUO"

Fastec Fittings

	Code	Description	Pack
	RF12210100	F13 90° M / F	10
	RF12310100	F13 T M / F / F	5
	KA00F10001	Dual joint Twin F13 F / F / M	5
	KA00K00002	F13 Plug M	20

Threaded fittings

	Code	Description	Pack
	KA00K00003	F13 M x R 1/2"	10
	KA00K00013	F13 M x R 3/4"	10
	RF12101000	F13 M x Rp 1/2"	10
	RF12111000	F13 M x Rp 3/4"	10
	RF122F0100	F13 M 90° x R 1/2"	10
	RF122F0200	F13 M 90° x Rp 1/2"	10

R (male) and Rp (female) threaded connections in accordance with EN 10226-1 and G threaded connections in accordance with ISO 228-1.

Fittings for PEX pipes

	Code	Pipe Ø x Thickness	Pack
	RF12100100	F13 M 16 x 1.8	10
	RF12100200	F13 M 20 x 1.5	10
	RF12100300	F13 M 25 x 2.3	5
	RF13M1210301	F13 M 12 x 1.1	10
	RF13M1610301	F13 M 16 x 1.5	10
	RF13M2010301	F13 M 20 x 1.9	10
	RF13M1210401	F13 M 12 x 1.1	10
	RF13M1610401	F13 M 16 x 1.5	10
	RF13M2010401	F13 M 20 x 1.9	10

Fittings for multi-layer pipes

	Code	Pipe Ø x Thickness	Pack
	RF13M16101VA	F13 M 16 x 2.0	10
	RF13M16102VA	F13 M 16 x 2.25	10
	RF13M20101VA	F13 M 20 x 2.0	10
	RF13M20102VA	F13 M 20 x 2.5	10
	RF13M26101VA	F13 M 26 x 3.0	5
	RF14M26101VA	F14 M 26 x 3.0	5
	RF14M32101VA	F14 M 32 x 3.0	5
	511115MP	F13 M 16 x 2.0	5
	511116MP	F13 M 16 x 2.25	5
	511118MP	F13 M 20 x 2.0	5
	511119MP	F13 M 20 x 2.25	5
	511120MP	F13 M 20 x 2.5	5
	511121MP	F13 M 25 x 2.5	5
	511122MP	F13 M 26 x 3.0	5
	1651039	F13 M 16 x 2.0	10
	1651040	F13 M 20 x 2.0	10
	1651041	F13 M 26 x 3.0	5
	39342	F13 M 16 x 2.0	10
	39344	F13 M 20 x 2.0	10

F13 Fittings with FASTEC connection available in manufacturers' catalogues

COMISA PRESS	HENCO	APE raccorderie AP SERIES	
Pipe Ø 16-20	Pipe Ø 16-20-26	Pipe Ø 16-20-26	
+GF+		TECE	
ALUPEX EXPRESS	JRG SANIPEX MT	LOGO	FLEX
Pipe Ø 16-20	Pipe Ø 16-20	Pipe Ø 20	Pipe Ø 16-20-25

Fastec application examples

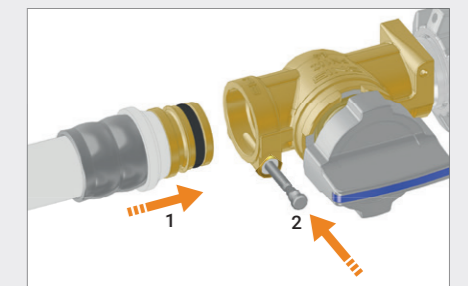
Compositions that can be made with products from the Fastec range: **adapters and fittings for multi-layer pipe** (see opposite page).

Adapters used:
2 x RF12210100
1 x RF12310100

Adapters used:
2 x KA00F10001

FASTEC®
THE FAST AND SECURE PLUMBING CONNECTION

Plumbing connection with pin locking (page 6).



1. Insert the fitting with the pin raised.
2. Lower the locking pin to complete the connection.

F13 DN 15 Equivalent to 1/2"



€100 ON/OFF ELECTRIC ACTUATOR FOR K4CC FLUSH-MOUNTED METER KIT WITH SHUT-OFF VALVES

€100 ON/OFF electric actuator



Includes:

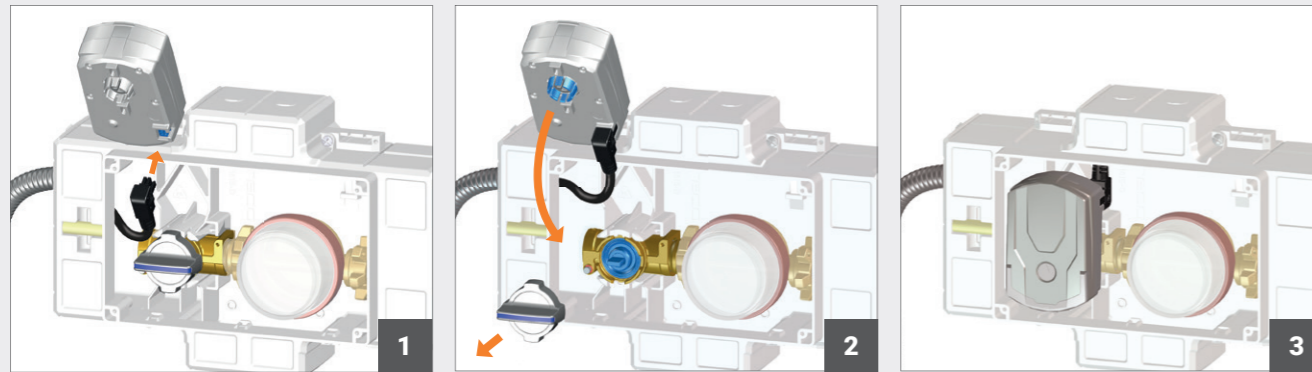
- €100 ON/OFF electric actuator
- 1.25 m cable with Molex Micro-Fit connector

Code	Voltage	Auxiliary microswitch position	Pack
E1045100	AC 110 ÷ 230 V 50-60 Hz	With valve closed	1
E1046100	AC/DC 24 V 50-60 Hz		

INSTALLATION EXAMPLE OF €100 ELECTRIC ACTUATOR



Once the electrical connection has been made, the valve can be motorised using the €100 electric actuator, optimised by TECO in terms of size, low consumption and quietness.



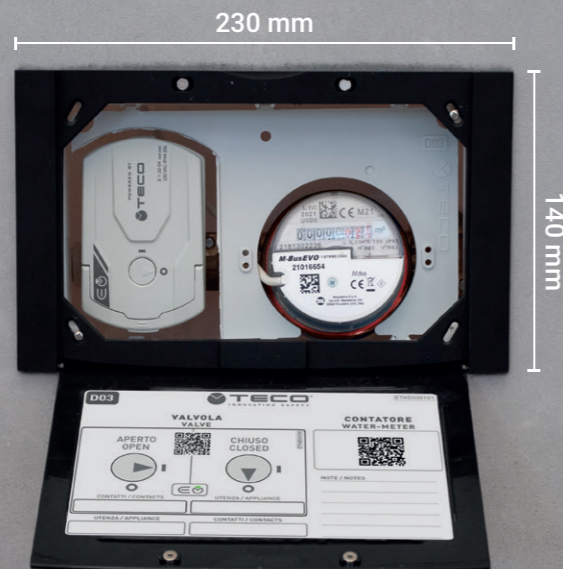
1 Insert the cable provided with the connector into the €100 electric actuator.

2 Remove the handle and insert the €100 electric actuator into the valve seat with light pressure.

3 €100 electric actuator installed and ready to operate.

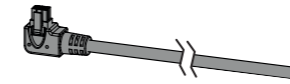
[i See page 96](#)

Minimum wall thickness 100 mm



ACCESSORIES FOR K4CC FLUSH-MOUNTED METER KIT WITH SHUT-OFF VALVES

Optional 3 metre cable for €100 electric actuator



Code	Description	Pack
KA00K00014	Kit of 6P X 3M cable + Micro-Fit connector	1

Communication modules for remote meter reading

The volumetric meter can be equipped with communication modules for remote metering.



Code	Description	Pack
KA00CC0001	EVO 868 MHz LoRaWAN Radio Module	1
KA00CC0002	EVO 868 MHz Wireless M-Bus Radio Module	1
KA00CC0003	M-Bus EVO module	1
KA00CC0004	Pulse Evo module	1

Volumetric meter



Code	Description	DN.	Pack
KA00CC0005	SJ EVO meter - Q ₃ m ³ / h. 2.5 - L. 80 - G 3/4"	15	1

Spare parts for K4CC "MONO" and K4CC "DUO"

See page 166, or visit the website for all product information.

