

FLUSH-MOUNTING MULTIPLE SHUT-OFF DOMESTIC WATER MANIFOLD KIT

K4.3

FLUSH-MOUNTING
PRACTICAL TO INSTALL
"SOFT TURN" ANTI-JAMMING TECHNOLOGY
"TOP ENTRY" REMOVABLE BALL



FIND OUT MORE



K4.3
7+6 outlet manifold kit with two T4 DN15 T-valves built in



K4.3
5+4 outlet manifold kit

APPLICATIONS

- For hot and cold drinking water.
- For cooling and heating water with or without antifreeze.
- Suitable for installation in masonry and plasterboard constructions (minimum thickness 100 mm).

TECHNICAL DATA

Temperature	+5 °C ÷ +95 °C
Pressure	PN 10 (10 bar)
Connections	Fastec
Reference standards	DIN EN 13828 W570-1 KTW-BWGL ACS PZH

FEATURES

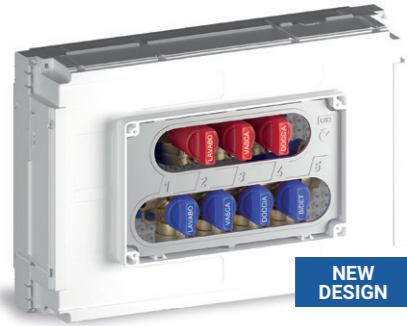
- **Compact flush-mounting domestic water distribution manifold kit.**
- Shut-off valves on the individual outlets.
- DN10 "Top Entry" valve with removable ball and "Soft Turn" anti-jamming technology, even after long periods of inactivity without the need for periodic activation.
- Different configurations up to 7 cold water + 6 hot water outlets.
- **Pre-assembled in a serviceable sandwich box** with knock-outs on all four sides.
- **Design faceplate with magnetic closure** available in a range of finishes.
- Identification of utilities with stickers to be applied to the control handle or inside the faceplate.
- Fast system connections **FASTEC®**



K4.3 FLUSH-MOUNTING MULTIPLE SHUT-OFF DOMESTIC MANIFOLD KIT



K4.3 flush-mounting multiple shut-off domestic manifold kit with 4+3 and 5+4 outlets **D03**



Includes:

- 2 DN15 manifolds with DN10 individual shut-off valves
- Box 310 x 210 x 85 mm
- Fixing bracket
- Site protection cover
- Stickers for utility identification

Does not include:

- Cover flap **D03** (see below)
- Fastec fittings (page 32)

Kit code	Outlets cold	Outlets hot	Connections	Pack
			FASTEC®	
K403DF10200	4	3	F13	5
K403DF10100	5	4	F13	5

[See page 32](#)

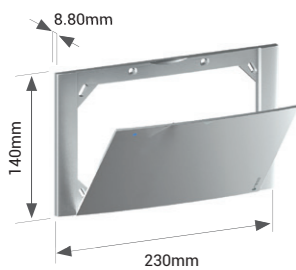
Application examples

Inlet from below or above

Downward recirculation configuration

Tight spaces:
The new design of the K4.3 allows for inlets from below or above within the box.

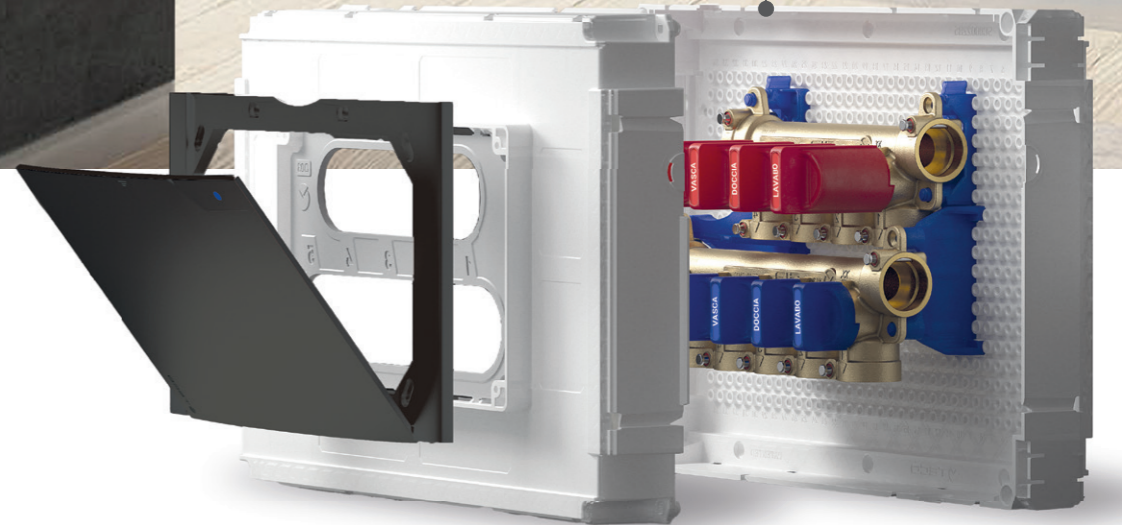
D03 Faceplate with magnetic closure for K4.3



Includes:

- Fixing screws

Code	Finish	Pack
KPLD0301600	White	5
KPLD0301M00	Polished chrome	1
KPLD0301800	Silver	1
KPLD0301A00	Black Soft Touch	1



K4.3 FLUSH-MOUNTING MULTIPLE SHUT-OFF DOMESTIC MANIFOLD KIT



K4.3 flush-mounting multiple shut-off domestic manifold kit with 5+4 and 6+5 outlets **E03**



Includes:

- 2 DN15 manifolds with DN10 individual shut-off valves
- Box 310 x 210 x 85 mm
- Fixing bracket
- Site protection cover
- Stickers for utility identification

Does not include:

- Cover flap **E03** (see below)
- Fastec fittings (page 32)

Kit code	Outlets cold	Outlets hot	Connections	Pack
			FASTEC®	
K403EF10300	5	4	F13	5
K403EF10100	6	5	F13	5

See page 32

Valves

Code	DN	Connections	Kv *	Pack
		FASTEC®		
T4P12C2100 ***	DN10	F13 F / F / M	4.0	5
T4P32C2100 **	DN15	F13 F / F / M	5.8	10
T4P32C3100 **	DN15	F13 M / F / F	5.8	10

See page 32

* The coefficient Kv defines the water flow (in m³/h from 5 °C to 40 °C) through a valve with a differential pressure of 1 bar.

** For main shut-off.

*** For extending K4.3 manifold utilities.

E03 Faceplate with magnetic closure for K4.3



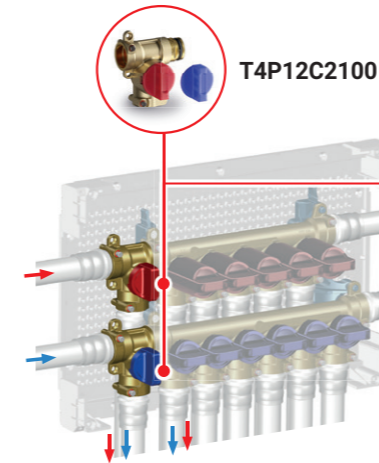
Includes:

- Fixing screws

Code	Finish	Pack
KPLE0301600	White	5
KPLE0301M00	Polished chrome	1
KPLE0301800	Silver	1
KPLE0301A00	Black Soft Touch	1

UTILITY EXTENSION possible combinations with K4.3 manifold up to 7+6 outlets

Applications for 6+5 and 5+4 manifolds can be customised by integrating the FASTEC T-valve.



Possible combinations with **K403EF10100 6+5 outlet manifold**

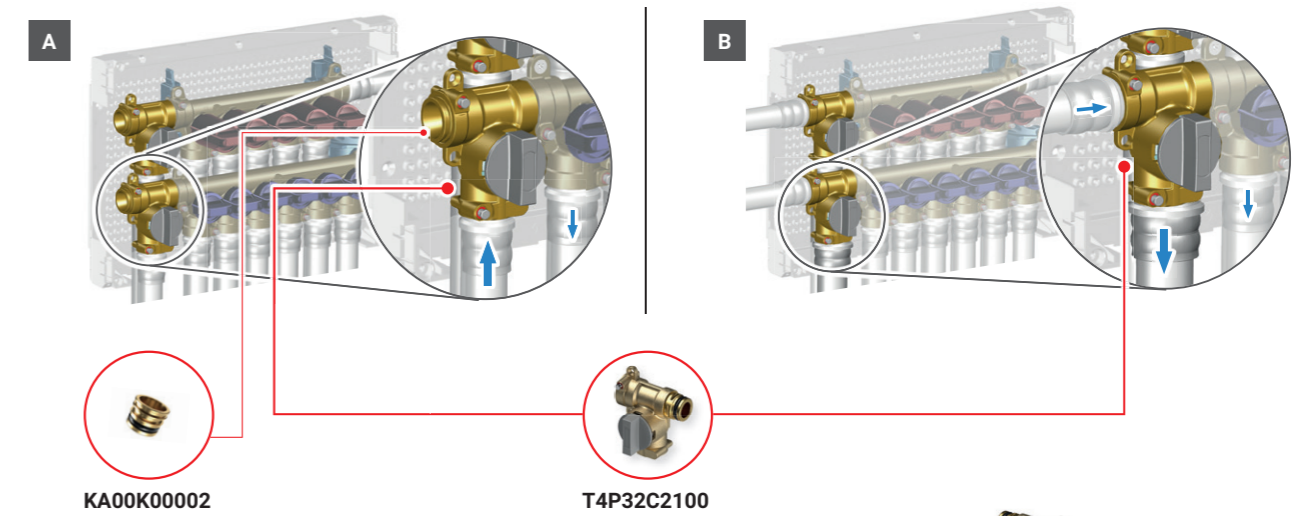
No. of additional T-valves	Outlets cold	Outlets hot
x2	7	6
x1	6	6
x1	7	5

Possible combinations with **K403EF10300 5+4 outlet manifold**

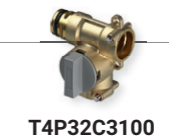
No. of additional T-valves	Outlets cold	Outlets hot
x1	6	4
x1	5	5

Application examples for K4.3 6+5 manifold with FASTEC T4 T valve DN15 Kv 5,8

The T4 DN15 valve can be used as a main shut-off (Example A), or to convert a 6+5 manifold into 7+6 with a higher flow rate outlet (Example B).



When right general shut-off is needed, use T4P32C3100 valve. In this case, disassemble the manifold and move it inside the BOX.



Spare parts for K4.3

See page 164, or visit the website for all product information.



FASTEC ADAPTERS AND FITTINGS
FOR K4.3 FLUSH-MOUNTING MULTIPLE SHUT-OFF DOMESTIC MANIFOLD KIT



Fastec adapters and fittings for K4.3

Fastec Fittings

	Code	Description	Pack
	RF12210100	F13 90° M / F	10
	RF12210200	F13 90° F / F	10
	RF12310100	F13 T M / F / F	5
	KA00F10001	Dual joint Twin F13 F / F / M	5
	KA00K00002	F13 Plug M	20
	RF12110400	F13 M L. 25 mm	10
	RF12110500	F13 M L. 50 mm	10
	RF12110600	F13 M L. 75 mm	8

Fittings for PEX pipes

	Code	Pipe Ø x Thickness	Pack
	RF12100100	F13 M 16 x 1.8	10
	RF12100200	F13 M 20 x 1.5	10
	RF12100300	F13 M 25 x 2.3	5
	RF13M1210301	F13 M 12 x 1.1	10
	RF13M1610301	F13 M 16 x 1.5	10
	RF13M2010301	F13 M 20 x 1.9	10
	RF13M1210401	F13 M 12 x 1.1	10
	RF13M1610401	F13 M 16 x 1.5	10
	RF13M2010401	F13 M 20 x 1.9	10

Threaded fittings

	Code	Description	Pack
	KA00K00003	F13 M x R 1/2"	10
	KA00K00013	F13 M x R 3/4"	10
	RF12101000	F13 M x Rp 1/2"	10
	RF12111000	F13 M x Rp 3/4"	10
	RF122F0100	F13 M 90° x R 1/2"	10
	RF122F0200	F13 M 90° x Rp 1/2"	10

R (male) and Rp (female) threaded connections in accordance with EN 10226-1 and G threaded connections in accordance with ISO 228-1.

Fittings for multi-layer pipes

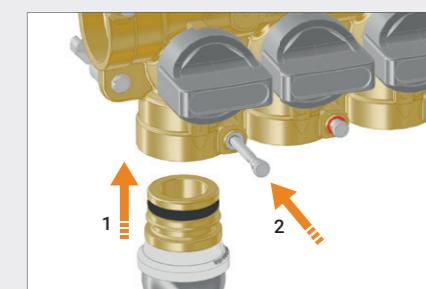
	Code	Pipe Ø x Thickness	Pack
	RF13M16101VA	F13 M 16 x 2.0	10
	RF13M16102VA	F13 M 16 x 2.25	10
	RF13M20101VA	F13 M 20 x 2.0	10
	RF13M20102VA	F13 M 20 x 2.5	10
	RF13M26101VA	F13 M 26 x 3.0	5
	RF14M26101VA	F14 M 26 x 3.0	5
	RF14M32101VA	F14 M 32 x 3.0	5
	511115MP	F13 M 16 x 2.0	5
	511116MP	F13 M 16 x 2.25	5
	511118MP	F13 M 20 x 2.0	5
	511119MP	F13 M 20 x 2.25	5
	511120MP	F13 M 20 x 2.5	5
	511121MP	F13 M 25 x 2.5	5
	511122MP	F13 M 26 x 3.0	5
	1651039	F13 M 16 x 2.0	10
	1651040	F13 M 20 x 2.0	10
	1651041	F13 M 26 x 3.0	5
	39342	F13 M 16 x 2.0	10
	39344	F13 M 20 x 2.0	10

F13 Fittings with FASTEC connection available in manufacturers' catalogues

 COMISA PRESS Pipe Ø 16-20	 HENCO Pipe Ø 16-20-26	 APE racorderie AP SERIES Pipe Ø 16-20-26	
 +GF+ ALUPEX EXPRESS Pipe Ø 16-20	 +GF+ JRG SANIPEX MT Pipe Ø 16-20	 TECE LOGO Pipe Ø 20	 TECE FLEX Pipe Ø 16-20-25

FASTEC®
THE FAST AND SECURE PLUMBING CONNECTION
Plumbing connection with pin locking (page 6).

F13 DN 15 Equivalent to 1/2"



1. Insert the fitting with the pin raised.
2. Lower the locking pin to complete the connection.