

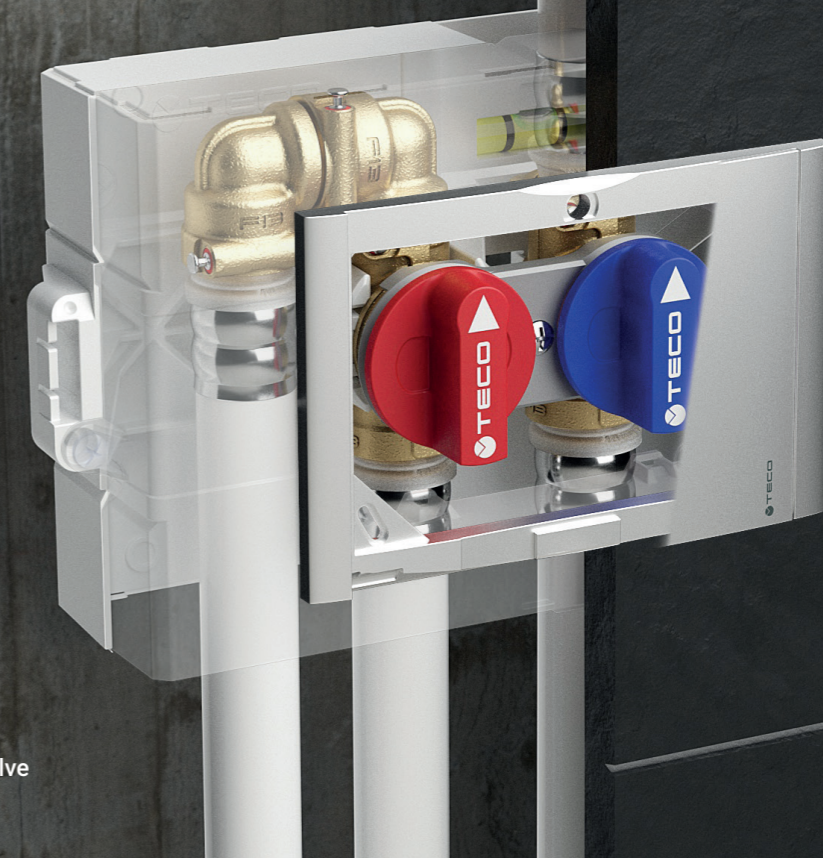
COMPACT FLUSH-MOUNTING SHUT-OFF KIT

K4.0 - K4.1 - K4 €

FLUSH-MOUNTING
PRACTICAL TO INSTALL
"SOFT TURN" ANTI-JAMMING TECHNOLOGY
"TOP ENTRY" REMOVABLE BALL



FIND OUT MORE



K4.0
With dual shut-off valve



K4 €
With €100 electric actuator

APPLICATIONS

- For hot and cold drinking water.
- For cooling and heating water with or without antifreeze.
- Suitable for installation in masonry and plasterboard constructions (**minimum thickness 85 mm for DN15 version and 100 mm for DN20 version**).

TECHNICAL DATA

Temperature	+5 °C ÷ +95 °C
Pressure	PN 10 (10 bar)
Connections	Fastec EN 10226-1 R/Rp thread
Reference standards	DIN EN 13828 W570-1 KTW-BWGL ACS PZH

FEATURES

- **Compact flush-mounting shut-off valve kit.**
- DN15-DN20 "Top Entry" valve with removable ball and "Soft Turn" anti-jamming technology to ensure jam-free operation even after long periods of inactivity without the need for periodic activation.
- Version with €100 optional electric actuator motor (for K4 € only).
- Pre-assembled in a serviceable sandwich box with knock-outs on all four sides.
- **Design faceplate with magnetic closure**, available in a range of finishes.
- Threaded or fast system connection versions **FASTEC®**



K4.0 - K4.1 - K4 €
COMPACT FLUSH-MOUNTING METERING KIT



K4.0 Kit with dual flush-mounting shut-off valve



Includes:

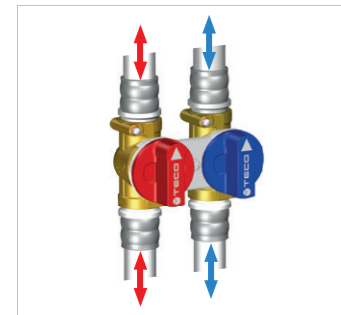
- 2 valves with removable balls
- Box 215 x 135 x 75 mm for the DN15 version
- Box 215 x 135 x 85 mm for the DN20 version
- Fixing bracket
- Site protection cover

Does not include:

- Cover door **B03**
- Fastec fittings (page 22)

Code	DN	Connections		Pack
		FASTEC®	Threaded	
K400BF10100	DN15	F13	-	5
K400B110100	DN15	-	Rp 1/2"	5
K400BE10100	DN15	-	EUROKONUS 3/4"	5
K400BF30100	DN20	F14	-	5
K400B110200	DN20	-	Rp 3/4"	5

[See page 22](#)



K4 € Single shut-off kit with valve for optional motor.



Includes:

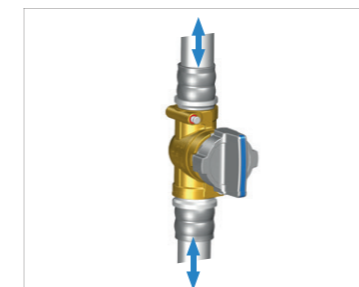
- 1 valve with removable ball and control knob for optional motor
- Box 205 x 135 x 75 mm for the DN15 version
- Box 205 x 135 x 85 mm for the DN20 version
- Fixing bracket
- Site protection cover

Does not include:

- Cover door **B03**
- Fastec fittings (page 22)
- €100 electric actuator (page 24)

Code	DN	Connections		Pack
		FASTEC®		
K401BF10300	DN15	F13		5
K401BF30200	DN20	F14		5

[See page 22](#)



K4.1 Single shut-off kit with "U" inlet and outlet



Includes:

- 1 valve with removable ball
- Box 155 x 115 x 75 mm
- Fixing bracket
- Site protection cover

Does not include:

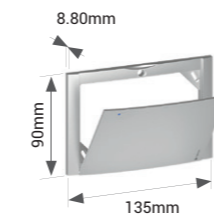
- Cover door **B03**
- Fastec fittings (page 22)

Code	DN	Connections		Pack
		FASTEC®	Threaded	
K401BF10100	DN15	F13	-	10
K401BE10100	DN15	-	EUROKONUS 3/4"	10
K401BF30100	DN20	F14	-	5

[See page 22](#)



B03 Faceplate with magnetic closure for K4.0, K4.1 e K4 €



Includes:

- Fixing screws

Code	Finish	Pack
KPLB0301600	White	10
KPLB0301M00	Polished chrome	5
KPLB0301800	Silver	5
KPLB0301A00	Black Soft Touch	5

Adapter for flat seal fittings for K4.0 and K4.1 valves

Code	Description	Pack
AP004003	Adapter for TECO flat seal fittings EK-TP	10

Fitting for multi-layer composite pipe with **EUROKONUS 3/4" SWIVEL NUT connection, not supplied by TECO.**

Spare parts for K4.0, K4.1 e K4 €

See page 162, or visit the website for all product information.



FASTEC ADAPTERS AND FITTINGS

FOR K4.0, K4.1 AND K4 € COMPACT FLUSH-MOUNTING SHUT-OFF KIT

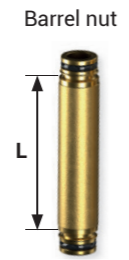


Fastec adapters and fittings for K4.0, K4.1 and K4 €

Fastec Fittings

Code	Description	Pack
RF12210200	F13 90° F / F	10
RF22220200	F14 90° F / F	10
RF12210100	F13 90° M / F	10
RF22220100	F14 90° M / F	10
RF12310200	F13 T F / F / F	5
RF22320200	F14 T F / F / F	5
RF12310100	F13 T M / F / F	5
RF22320100	F14 T M / F / F	5
KA00F10001	Dual joint Twin F13 F / F / M	5

Code	Description	Pack
KA00K00008	F13 Nipple M / M	10
KA00K00017	F14 Nipple M / M	10
KA00K00002	F13 Plug M	20
KA00K00010	F14 Plug M	10
RF12110400	F13 M L. 25 mm	10
RF12110500	F13 M L. 50 mm	10
RF12110600	F13 M L. 75 mm	8



Fittings for multi-layer pipes

Code	Pipe Ø x Thickness	Pack
RF13M16101VA	F13 M 16 x 2.0	10
RF13M16102VA	F13 M 16 x 2.25	10
RF13M20101VA	F13 M 20 x 2.0	10
RF13M20102VA	F13 M 20 x 2.5	10
RF13M26101VA	F13 M 26 x 3.0	5
RF14M26101VA	F14 M 26 x 3.0	5
RF14M32101VA	F14 M 32 x 3.0	5
511115MP	F13 M 16 x 2.0	5
511116MP	F13 M 16 x 2.25	5
511118MP	F13 M 20 x 2.0	5
511119MP	F13 M 20 x 2.25	5
511120MP	F13 M 20 x 2.5	5
511121MP	F13 M 25 x 2.5	5
511122MP	F13 M 26 x 3.0	5
1651039	F13 M 16 x 2.0	10
1651040	F13 M 20 x 2.0	10
1651041	F13 M 26 x 3.0	5
39342	F13 M 16 x 2.0	10
39344	F13 M 20 x 2.0	10



Threaded fittings

Code	Description	Pack
KA00K00003	F13 M x R 1/2"	10
KA00K00013	F13 M x R 3/4"	10
KA00K00009	F14 M x R 3/4"	10
KA00K00019	F14 M x R 1"	10
RF12101000	F13 M x Rp 1/2"	10
RF12111000	F13 M x Rp 3/4"	10
RF12120100	F14 M x Rp 3/4"	10
RF12120200	F14 M x Rp 1"	10
RF122F0100	F13 M 90° x R 1/2"	10
RF122F0200	F13 M 90° x Rp 1/2"	10
RF12110900	SWIVEL NUT FLAT SEAL WITH O-RING F13 M x G 3/4"	10

R (male) and Rp (female) threaded connections in accordance with EN 10226-1 and G threaded connections in accordance with ISO 228-1.

Fittings for PEX pipes

Code	Pipe Ø x Thickness	Pack
RF12100100	F13 M 16 x 1.8	10
RF12100200	F13 M 20 x 1.5	10
RF12100300	F13 M 25 x 2.3	5
RF13M1210301	F13 M 12 x 1.1	10
RF13M1610301	F13 M 16 x 1.5	10
RF13M2010301	F13 M 20 x 1.9	10
RF13M1210401	F13 M 12 x 1.1	10
RF13M1610401	F13 M 16 x 1.5	10
RF13M2010401	F13 M 20 x 1.9	10



F13 Fittings with FASTEC connection available in manufacturers' catalogues

COMISA PRESS

Pipe Ø 16-20

HENCO

Pipe Ø 16-20-26

APE racorderie AP SERIES

Pipe Ø 16-20-26

+GF+

ALUPEX EXPRESS

Pipe Ø 16-20

JRG SANIPEX MT

Pipe Ø 16-20

TECE

LOGO

Pipe Ø 20

FLEX

Pipe Ø 16-20-25

Fastec application examples

1 x RF12210100
2 x RF12310100
1 x KA00F10001

4 x RF12210100

Compositions that can be made with products from the Fastec range: adapters and fittings for multi-layer pipe (see opposite page).

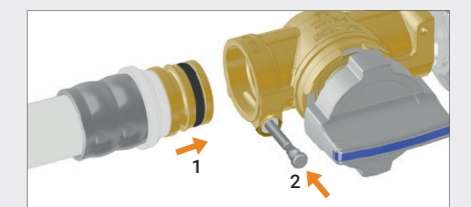
Tight spaces: The new design of the K4.0 allows for inlets from below or above within the box.

FASTEC® THE FAST AND SECURE PLUMBING CONNECTION

Plumbing connection with pin locking (page 6).

F13 DN 15 Equivalent to 1/2"

F14 DN 20 Equivalent to 3/4"



1. Insert the fitting with the pin raised.
2. Lower the locking pin to complete the connection.

€100 ON/OFF ELECTRIC ACTUATOR
FOR K4 € SINGLE SHUT-OFF KIT



€100 ON/OFF electric actuator

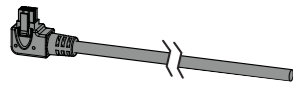
Includes:

- €100 ON/OFF electric actuator
- 1.25 m cable with Molex Micro-Fit connector



Code	Voltage	Auxiliary microswitch position	Pack
E1045100	AC 110 ÷ 230 V 50-60 Hz	With valve closed	1
E1046100	AC/DC 24 V 50-60 Hz		
E1042100	AC 110 ÷ 230 V 50-60 Hz	With valve open (zone valve)	1
E1044100	AC/DC 24 V 50-60 Hz		

Optional 3 metre cable for €100 electric actuator

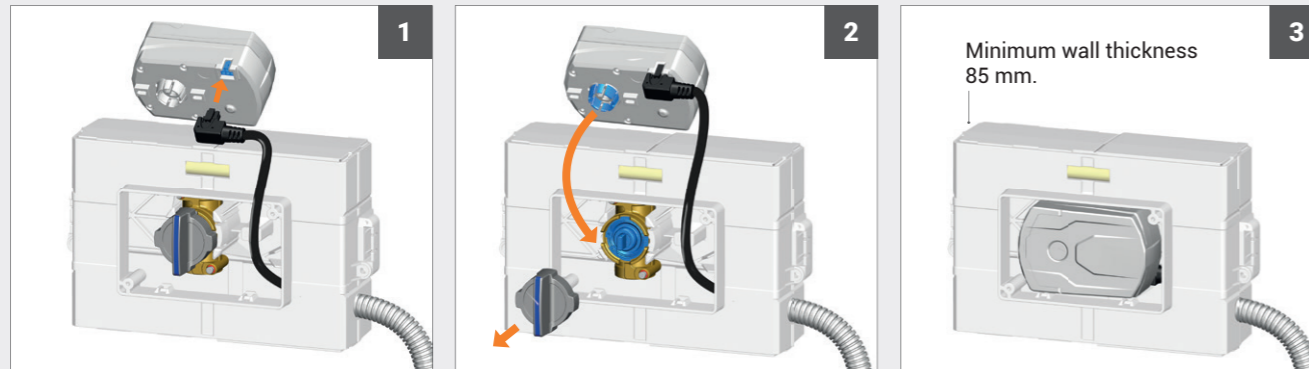


Code	Description	Pack
KA00K00014	Kit of 6P X 3M cable + Micro-Fit connector	1

INSTALLATION EXAMPLE OF €100 ELECTRIC ACTUATOR WITH K4€ VALVE



Once the electrical connection has been made, the valve can be motorised using the €100 electric actuator, optimised by TECO in terms of size, low consumption and quietness.



1 Insert the cable provided with the connector into the €100 electric actuator.

2 Remove the handle and insert the €100 electric actuator into the valve seat with light pressure.

3 Minimum wall thickness 85 mm.
€100 electric actuator installed and ready to operate.

i See page 96

