



# K4 SERIES

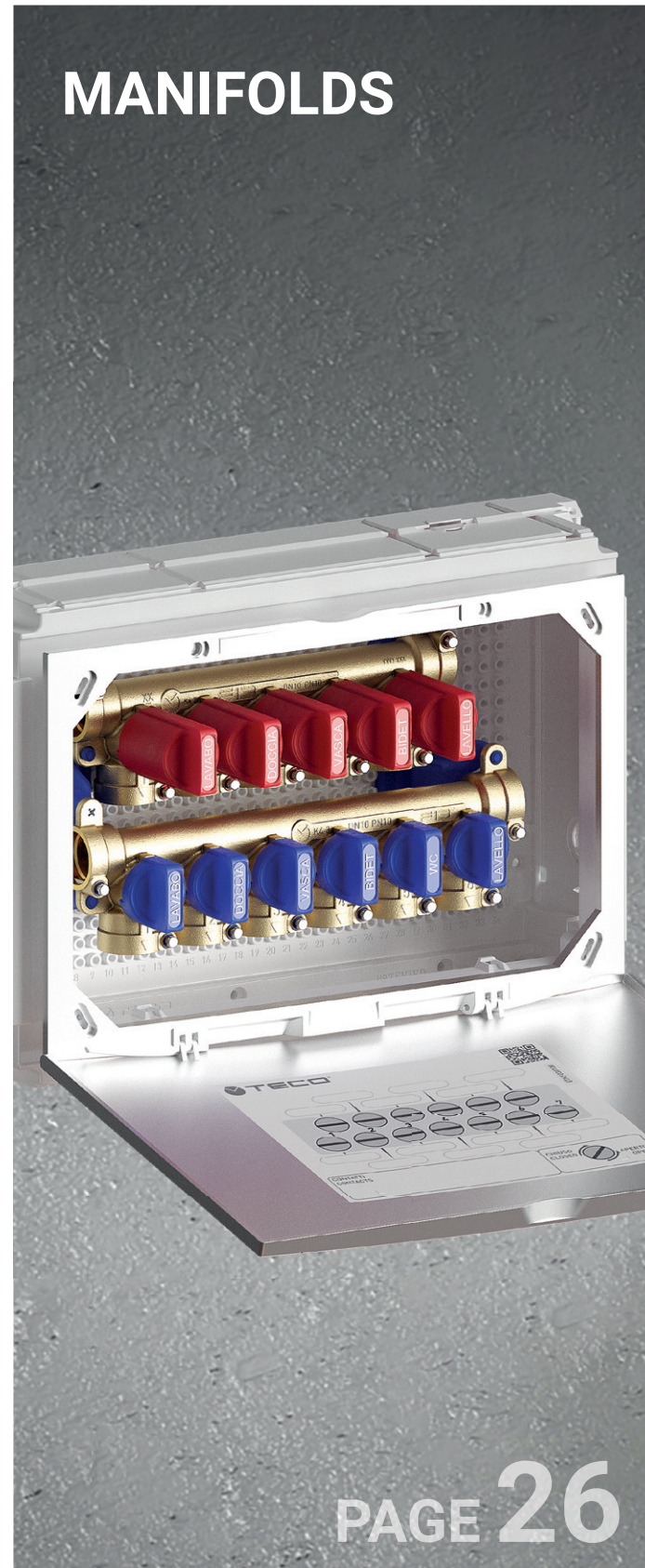
## PRE-ASSEMBLED FLUSH-MOUNTING MODULAR WATER DISTRIBUTION SYSTEM

### VALVES



PAGE 18

### MANIFOLDS



PAGE 26

### METERS



PAGE 40

#### K4 SERIES The TECO flush-mounting modular system Pre-assembled versions

The K4 Series flush-mounting system distributes hot and cold water, while raising technical and aesthetic standards.

IT IS equipped with "Top Entry" full flow valves with removable ball and anti-jamming 'Soft Turn' technology.

These features ensure optimal operation even after long periods of inactivity without the need for periodic activation.

Its compact structure allows installation in any location to satisfy a variety of system requirements.

The design doors with **magnetic closure**, available in a range of colours and finishes ensure that the K4 series products lend seamlessly with the surroundings and furnishings.

Products with optional motors allow remote water shut-off and metering, thanks to the inclusion of the **€100 Series motor**, which is silent, efficient and small in size.



# COMPACT FLUSH-MOUNTING SHUT-OFF KIT

## K4.0 - K4.1 - K4 €

FLUSH-MOUNTING  
PRACTICAL TO INSTALL  
"SOFT TURN" ANTI-JAMMING TECHNOLOGY  
"TOP ENTRY" REMOVABLE BALL



FIND OUT MORE



K4.0  
With dual shut-off valve



K4 €  
With €100 electric actuator

### APPLICATIONS

- For hot and cold drinking water.
- For cooling and heating water with or without antifreeze.
- Suitable for installation in masonry and plasterboard constructions (**minimum thickness 85 mm for DN15 version and 100 mm for DN20 version**).

### TECHNICAL DATA

Temperature	+5 °C ÷ +95 °C
Pressure	PN 10 (10 bar)
Connections	Fastec EN 10226-1 R/Rp thread
Reference standards	DIN EN 13828 W570-1 KTW-BWGL ACS PZH

### FEATURES

- **Compact flush-mounting shut-off valve kit.**
- DN15-DN20 "Top Entry" valve with removable ball and "Soft Turn" anti-jamming technology to ensure jam-free operation even after long periods of inactivity without the need for periodic activation.
- Version with €100 optional electric actuator motor (for K4 € only).
- Pre-assembled in a serviceable sandwich box with knock-outs on all four sides.
- **Design faceplate with magnetic closure**, available in a range of finishes.
- Threaded or fast system connection versions **FASTEC®**





**K4.0 - K4.1 - K4 €**  
COMPACT FLUSH-MOUNTING METERING KIT



**K4.0 Kit with dual flush-mounting shut-off valve**



**Includes:**

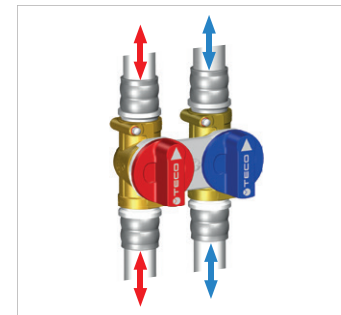
- 2 valves with removable balls
- Box 215 x 135 x 75 mm for the DN15 version
- Box 215 x 135 x 85 mm for the DN20 version
- Fixing bracket
- Site protection cover

**Does not include:**

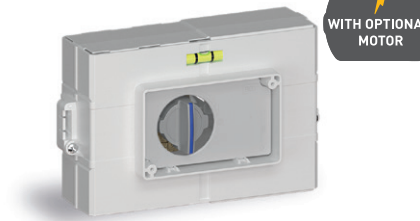
- Cover door **B03**
- Fastec fittings (page 22)

Code	DN	Connections		Pack
		FASTEC®	Threaded	
K400BF10100	DN15	<b>F13</b>	-	5
K400B110100	DN15	-	Rp 1/2"	5
K400BE10100	DN15	-	EUROKONUS 3/4"	5
K400BF30100	DN20	<b>F14</b>	-	5
K400B110200	DN20	-	Rp 3/4"	5

[See page 22](#)



**K4 € Single shut-off kit with valve for optional motor.**



**Includes:**

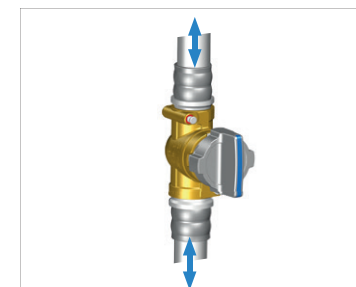
- 1 valve with removable ball and control knob for optional motor
- Box 205 x 135 x 75 mm for the DN15 version
- Box 205 x 135 x 85 mm for the DN20 version
- Fixing bracket
- Site protection cover

**Does not include:**

- Cover door **B03**
- Fastec fittings (page 22)
- €100 electric actuator (page 24)

Code	DN	Connections		Pack
		FASTEC®		
K401BF10300	DN15	<b>F13</b>		5
K401BF30200	DN20	<b>F14</b>		5

[See page 22](#)



**K4.1 Single shut-off kit with "U" inlet and outlet**



**Includes:**

- 1 valve with removable ball
- Box 155 x 115 x 75 mm
- Fixing bracket
- Site protection cover

**Does not include:**

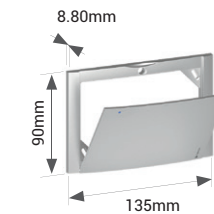
- Cover door **B03**
- Fastec fittings (page 22)

Code	DN	Connections		Pack
		FASTEC®	Threaded	
K401BF10100	DN15	<b>F13</b>	-	10
K401BE10100	DN15	-	EUROKONUS 3/4"	10
K401BF30100	DN20	<b>F14</b>	-	5

[See page 22](#)



**B03 Faceplate with magnetic closure for K4.0, K4.1 e K4 €**



**Includes:**

- Fixing screws

Code	Finish	Pack
KPLB0301600	White	10
KPLB0301M00	Polished chrome	5
KPLB0301800	Silver	5
KPLB0301A00	Black Soft Touch	5

**Adapter for flat seal fittings for K4.0 and K4.1 valves**

Code	Description	Pack
AP004003	Adapter for TECO flat seal fittings EK-TP	10

Fitting for multi-layer composite pipe with **EUROKONUS 3/4" SWIVEL NUT connection, not supplied by TECO.**

**Spare parts for K4.0, K4.1 e K4 €**

See page 162, or visit the website for all product information.



**FASTEC ADAPTERS AND FITTINGS**

FOR K4.0, K4.1 AND K4 € COMPACT FLUSH-MOUNTING SHUT-OFF KIT



**Fastec adapters and fittings for K4.0, K4.1 and K4 €**

**Fastec Fittings**

Code	Description	Pack
RF12210200	F13 90° F / F	10
RF22220200	F14 90° F / F	10
RF12210100	F13 90° M / F	10
RF22220100	F14 90° M / F	10
RF12310200	F13 T F / F / F	5
RF22320200	F14 T F / F / F	5
RF12310100	F13 T M / F / F	5
RF22320100	F14 T M / F / F	5
KA00F10001	Dual joint Twin F13 F / F / M	5

Code	Description	Pack
KA00K00008	F13 Nipple M / M	10
KA00K00017	F14 Nipple M / M	10
KA00K00002	F13 Plug M	20
KA00K00010	F14 Plug M	10
RF12110400	F13 M L. 25 mm	10
RF12110500	F13 M L. 50 mm	10
RF12110600	F13 M L. 75 mm	8



**Fittings for multi-layer pipes**

Code	Pipe Ø x Thickness	Pack
RF13M16101VA	F13 M 16 x 2.0	10
RF13M16102VA	F13 M 16 x 2.25	10
RF13M20101VA	F13 M 20 x 2.0	10
RF13M20102VA	F13 M 20 x 2.5	10
RF13M26101VA	F13 M 26 x 3.0	5
RF14M26101VA	F14 M 26 x 3.0	5
RF14M32101VA	F14 M 32 x 3.0	5
511115MP	F13 M 16 x 2.0	5
511116MP	F13 M 16 x 2.25	5
511118MP	F13 M 20 x 2.0	5
511119MP	F13 M 20 x 2.25	5
511120MP	F13 M 20 x 2.5	5
511121MP	F13 M 25 x 2.5	5
511122MP	F13 M 26 x 3.0	5
1651039	F13 M 16 x 2.0	10
1651040	F13 M 20 x 2.0	10
1651041	F13 M 26 x 3.0	5
39342	F13 M 16 x 2.0	10
39344	F13 M 20 x 2.0	10



**Threaded fittings**

Code	Description	Pack
KA00K00003	F13 M x R 1/2"	10
KA00K00013	F13 M x R 3/4"	10
KA00K00009	F14 M x R 3/4"	10
KA00K00019	F14 M x R 1"	10
RF12101000	F13 M x Rp 1/2"	10
RF12111000	F13 M x Rp 3/4"	10
RF12120100	F14 M x Rp 3/4"	10
RF12120200	F14 M x Rp 1"	10
RF122F0100	F13 M 90° x R 1/2"	10
RF122F0200	F13 M 90° x Rp 1/2"	10
RF12110900	SWIVEL NUT FLAT SEAL WITH O-RING F13 M x G 3/4"	10

R (male) and Rp (female) threaded connections in accordance with EN 10226-1 and G threaded connections in accordance with ISO 228-1.

**Fittings for PEX pipes**

Code	Pipe Ø x Thickness	Pack
RF12100100	F13 M 16 x 1.8	10
RF12100200	F13 M 20 x 1.5	10
RF12100300	F13 M 25 x 2.3	5
RF13M1210301	F13 M 12 x 1.1	10
RF13M1610301	F13 M 16 x 1.5	10
RF13M2010301	F13 M 20 x 1.9	10
RF13M1210401	F13 M 12 x 1.1	10
RF13M1610401	F13 M 16 x 1.5	10
RF13M2010401	F13 M 20 x 1.9	10



**F13 Fittings with FASTEC connection available in manufacturers' catalogues**

COMISA PRESS

Pipe Ø 16-20

HENCO

Pipe Ø 16-20-26

APE racorderie AP SERIES

Pipe Ø 16-20-26

**+GF+**

ALUPEX EXPRESS

Pipe Ø 16-20

JRG SANIPEX MT

Pipe Ø 16-20

**TECE**

LOGO

Pipe Ø 20

FLEX

Pipe Ø 16-20-25

**Fastec application examples**

1 x RF12210100  
2 x RF12310100  
1 x KA00F10001

4 x RF12210100

Compositions that can be made with products from the Fastec range: adapters and fittings for multi-layer pipe (see opposite page).

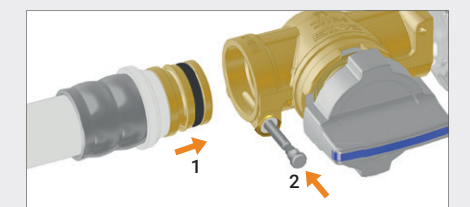
**Tight spaces:** The new design of the K4.0 allows for inlets from below or above within the box.

**FASTEC® THE FAST AND SECURE PLUMBING CONNECTION**

Plumbing connection with pin locking (page 6).

**F13** DN 15 Equivalent to 1/2"

**F14** DN 20 Equivalent to 3/4"



1. Insert the fitting with the pin raised.
2. Lower the locking pin to complete the connection.





**€100 ON/OFF ELECTRIC ACTUATOR**  
FOR K4 € SINGLE SHUT-OFF KIT

**€100 ON/OFF electric actuator**

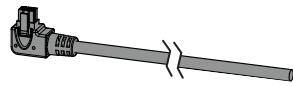


**Includes:**

- €100 ON/OFF electric actuator
- 1.25 m cable with Molex Micro-Fit connector

Code	Voltage	Auxiliary microswitch position	Pack
E1045100	AC 110 ÷ 230 V 50-60 Hz	With valve closed	1
E1046100	AC/DC 24 V 50-60 Hz		
E1042100	AC 110 ÷ 230 V 50-60 Hz	With valve open (zone valve)	1
E1044100	AC/DC 24 V 50-60 Hz		

**Optional 3 metre cable for €100 electric actuator**

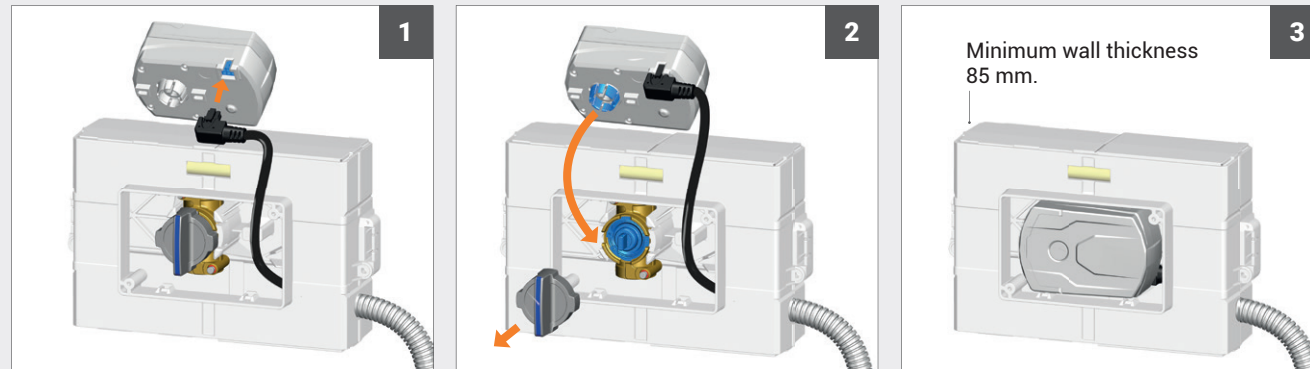


Code	Description	Pack
KA00K00014	Kit of 6P X 3M cable + Micro-Fit connector	1

**INSTALLATION EXAMPLE OF €100 ELECTRIC ACTUATOR WITH K4€ VALVE**



Once the electrical connection has been made, the valve can be motorised using the €100 electric actuator, optimised by TECO in terms of size, low consumption and quietness.

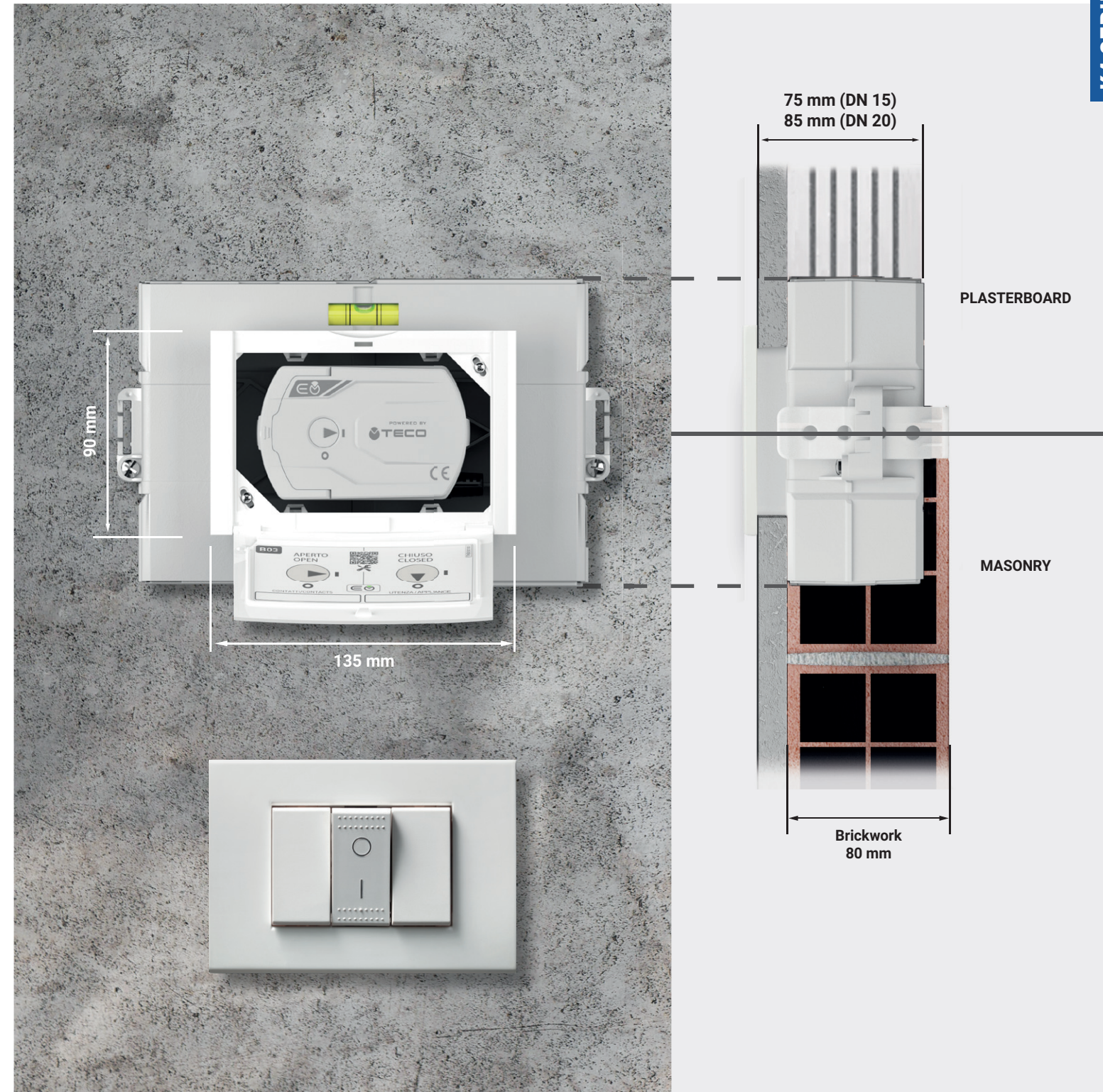


**1** Insert the cable provided with the connector into the €100 electric actuator.

**2** Remove the handle and insert the €100 electric actuator into the valve seat with light pressure.

**3** Minimum wall thickness 85 mm.  
€100 electric actuator installed and ready to operate.

**i** See page 96





# FLUSH-MOUNTING MULTIPLE SHUT-OFF DOMESTIC WATER MANIFOLD KIT

## K4.3

FLUSH-MOUNTING  
PRACTICAL TO INSTALL  
"SOFT TURN" ANTI-JAMMING TECHNOLOGY  
"TOP ENTRY" REMOVABLE BALL



FIND OUT MORE



K4.3  
7+6 outlet manifold kit with two T4 DN15 T-valves built in



K4.3  
5+4 outlet manifold kit

### APPLICATIONS

- For hot and cold drinking water.
- For cooling and heating water with or without antifreeze.
- Suitable for installation in masonry and plasterboard constructions (minimum thickness 100 mm).

### TECHNICAL DATA

Temperature	+5 °C ÷ +95 °C
Pressure	PN 10 (10 bar)
Connections	Fastec
Reference standards	DIN EN 13828 W570-1 KTW-BWGL ACS PZH

### FEATURES

- **Compact flush-mounting domestic water distribution manifold kit.**
- Shut-off valves on the individual outlets.
- DN10 "Top Entry" valve with removable ball and "Soft Turn" anti-jamming technology, even after long periods of inactivity without the need for periodic activation.
- Different configurations up to 7 cold water + 6 hot water outlets.
- **Pre-assembled in a serviceable sandwich box** with knock-outs on all four sides.
- **Design faceplate with magnetic closure** available in a range of finishes.
- Identification of utilities with stickers to be applied to the control handle or inside the faceplate.
- Fast system connections **FASTEC®**

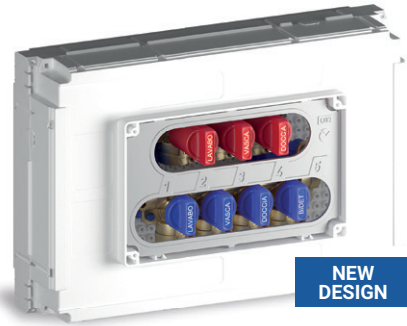




K4.3 FLUSH-MOUNTING MULTIPLE SHUT-OFF DOMESTIC MANIFOLD KIT



K4.3 flush-mounting multiple shut-off domestic manifold kit with 4+3 and 5+4 outlets **D03**



**Includes:**

- 2 DN15 manifolds with DN10 individual shut-off valves
- Box 310 x 210 x 85 mm
- Fixing bracket
- Site protection cover
- Stickers for utility identification

**Does not include:**

- Cover flap **D03** (see below)
- Fastec fittings (page 32)

Kit code	Outlets cold	Outlets hot	Connections	Pack
			FASTEC®	
K403DF10200	4	3	F13	5
K403DF10100	5	4	F13	5

[See page 32](#)

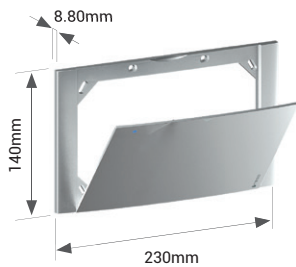
**Application examples**

**Inlet from below or above**

**Downward recirculation configuration**

**Tight spaces:**  
The new design of the K4.3 allows for inlets from below or above within the box.

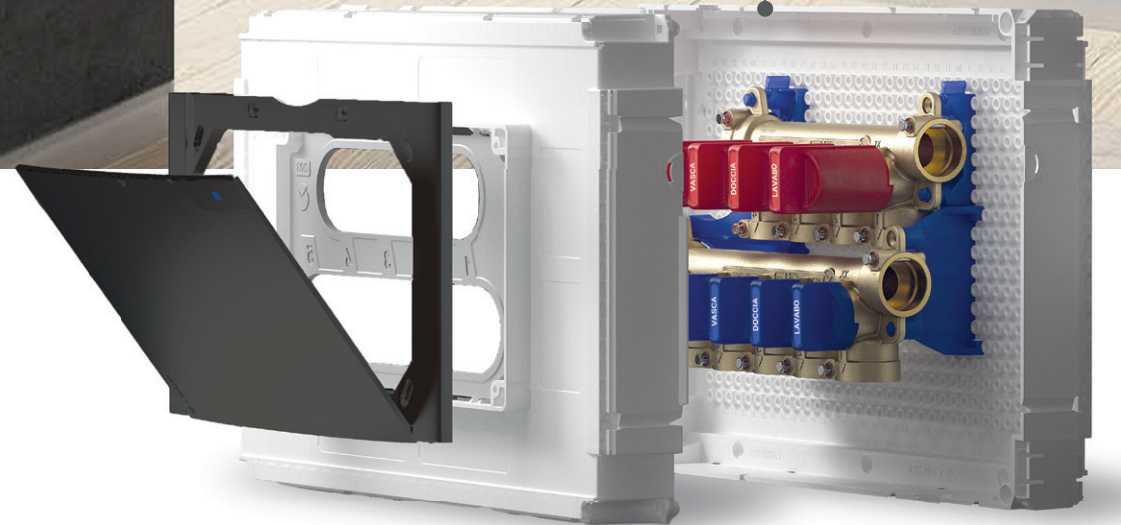
**D03** Faceplate with magnetic closure for K4.3



**Includes:**

- Fixing screws

Code	Finish	Pack
KPLD0301600	White	5
KPLD0301M00	Polished chrome	1
KPLD0301800	Silver	1
KPLD0301A00	Black Soft Touch	1

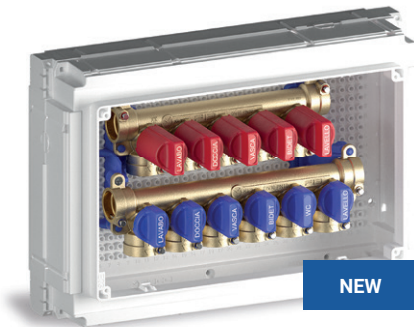




**K4.3 FLUSH-MOUNTING MULTIPLE SHUT-OFF DOMESTIC MANIFOLD KIT**



**K4.3 flush-mounting multiple shut-off domestic manifold kit with 5+4 and 6+5 outlets** **E03**



**Includes:**

- 2 DN15 manifolds with DN10 individual shut-off valves
- Box 310 x 210 x 85 mm
- Fixing bracket
- Site protection cover
- Stickers for utility identification

**Does not include:**

- Cover flap **E03** (see below)
- Fastec fittings (page 32)

Kit code	Outlets cold	Outlets hot	Connections	Pack
			FASTEC®	
K403EF10300	5	4	F13	5
K403EF10100	6	5	F13	5

See page 32

**Valves**

Code	DN	Connections	Kv *	Pack
		FASTEC®		
T4P12C2100 ***	DN10	F13 F / F / M	4.0	5
T4P32C2100 **	DN15	F13 F / F / M	5.8	10
T4P32C3100 **	DN15	F13 M / F / F	5.8	10

See page 32

\* The coefficient Kv defines the water flow (in m³/h from 5 °C to 40 °C) through a valve with a differential pressure of 1 bar.

\*\* For main shut-off.

\*\*\* For extending K4.3 manifold utilities.

**E03 Faceplate with magnetic closure for K4.3**



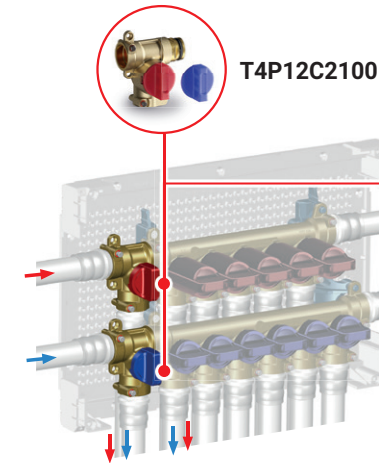
**Includes:**

- Fixing screws

Code	Finish	Pack
KPLE0301600	White	5
KPLE0301M00	Polished chrome	1
KPLE0301800	Silver	1
KPLE0301A00	Black Soft Touch	1

**UTILITY EXTENSION possible combinations with K4.3 manifold up to 7+6 outlets**

Applications for 6+5 and 5+4 manifolds can be customised by integrating the FASTEC T-valve.



Possible combinations with **K403EF10100 6+5 outlet manifold**

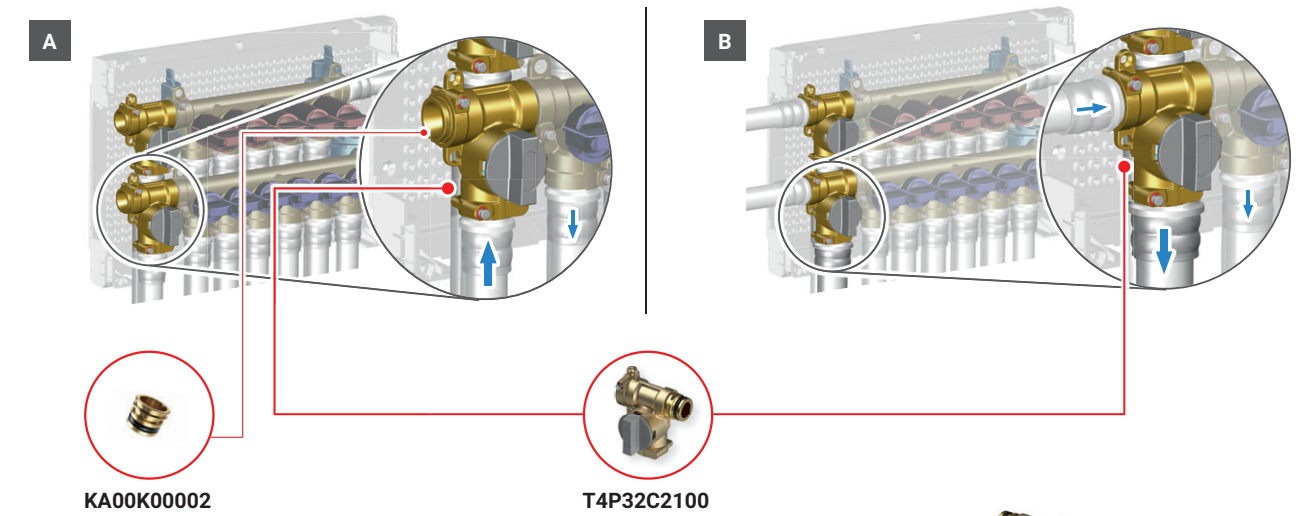
No. of additional T-valves	Outlets cold	Outlets hot
x2	7	6
x1	6	6
x1	7	5

Possible combinations with **K403EF10300 5+4 outlet manifold**

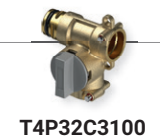
No. of additional T-valves	Outlets cold	Outlets hot
x1	6	4
x1	5	5

**Application examples for K4.3 6+5 manifold with FASTEC T4 T valve DN15 Kv 5,8**

The T4 DN15 valve can be used as a main shut-off (Example A), or to convert a 6+5 manifold into 7+6 with a higher flow rate outlet (Example B).



When right general shut-off is needed, use T4P32C3100 valve. In this case, disassemble the manifold and move it inside the BOX.



**Spare parts for K4.3**

See page 164, or visit the website for all product information.





**FASTEC ADAPTERS AND FITTINGS**  
FOR K4.3 FLUSH-MOUNTING MULTIPLE SHUT-OFF DOMESTIC MANIFOLD KIT



**Fastec adapters and fittings for K4.3**

**Fastec Fittings**

	Code	Description	Pack
	RF12210100	F13 90° M / F	10
	RF12210200	F13 90° F / F	10
	RF12310100	F13 T M / F / F	5
	KA00F10001	Dual joint Twin F13 F / F / M	5
	KA00K00002	F13 Plug M	20
	RF12110400	F13 M L. 25 mm	10
	RF12110500	F13 M L. 50 mm	10
	RF12110600	F13 M L. 75 mm	8

**Fittings for PEX pipes**

	Code	Pipe Ø x Thickness	Pack
	RF12100100	F13 M 16 x 1.8	10
	RF12100200	F13 M 20 x 1.5	10
	RF12100300	F13 M 25 x 2.3	5
	RF13M1210301	F13 M 12 x 1.1	10
	RF13M1610301	F13 M 16 x 1.5	10
	RF13M2010301	F13 M 20 x 1.9	10
	RF13M1210401	F13 M 12 x 1.1	10
	RF13M1610401	F13 M 16 x 1.5	10
	RF13M2010401	F13 M 20 x 1.9	10

**Threaded fittings**

	Code	Description	Pack
	KA00K00003	F13 M x R 1/2"	10
	KA00K00013	F13 M x R 3/4"	10
	RF12101000	F13 M x Rp 1/2"	10
	RF12111000	F13 M x Rp 3/4"	10
	RF122F0100	F13 M 90° x R 1/2"	10
	RF122F0200	F13 M 90° x Rp 1/2"	10

R (male) and Rp (female) threaded connections in accordance with EN 10226-1 and G threaded connections in accordance with ISO 228-1.

**Fittings for multi-layer pipes**

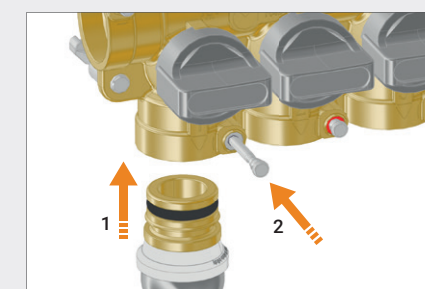
	Code	Pipe Ø x Thickness	Pack
	RF13M16101VA	F13 M 16 x 2.0	10
	RF13M16102VA	F13 M 16 x 2.25	10
	RF13M20101VA	F13 M 20 x 2.0	10
	RF13M20102VA	F13 M 20 x 2.5	10
	RF13M26101VA	F13 M 26 x 3.0	5
	RF14M26101VA	F14 M 26 x 3.0	5
	RF14M32101VA	F14 M 32 x 3.0	5
	511115MP	F13 M 16 x 2.0	5
	511116MP	F13 M 16 x 2.25	5
	511118MP	F13 M 20 x 2.0	5
	511119MP	F13 M 20 x 2.25	5
	511120MP	F13 M 20 x 2.5	5
	511121MP	F13 M 25 x 2.5	5
	511122MP	F13 M 26 x 3.0	5
	1651039	F13 M 16 x 2.0	10
	1651040	F13 M 20 x 2.0	10
	1651041	F13 M 26 x 3.0	5
	39342	F13 M 16 x 2.0	10
	39344	F13 M 20 x 2.0	10

**F13 Fittings with FASTEC connection available in manufacturers' catalogues**

COMISA PRESS	HENCO	APE racorderie AP SERIES	
Pipe Ø 16-20	Pipe Ø 16-20-26	Pipe Ø 16-20-26	
+GF+ ALUPEX EXPRESS	JRG SANIPEX MT	TECE LOGO	TECE FLEX
Pipe Ø 16-20	Pipe Ø 16-20	Pipe Ø 20	Pipe Ø 16-20-25

**FASTEC®**  
THE FAST AND SECURE PLUMBING CONNECTION  
Plumbing connection with pin locking (page 6).

**F13 DN 15** Equivalent to 1/2"



1. Insert the fitting with the pin raised.
2. Lower the locking pin to complete the connection.



# DOMESTIC WATER MANIFOLD KIT WITH FLUSH-MOUNTING MAIN SHUT-OFF VALVE

## K4.2

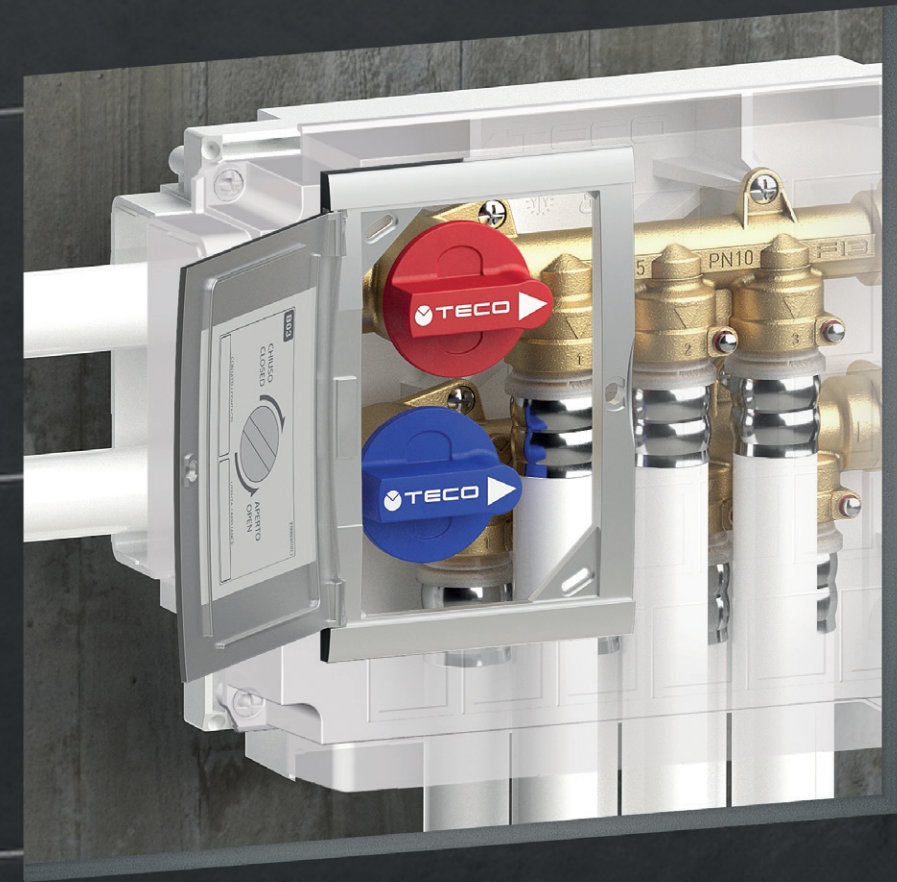
FLUSH-MOUNTING  
PRACTICAL TO INSTALL  
"SOFT TURN" ANTI-JAMMING TECHNOLOGY  
"TOP ENTRY" REMOVABLE BALL



FIND OUT MORE



K4.2 domestic water manifold kit with flush-mounting main shut-off valve



### APPLICATIONS

- For hot and cold drinking water.
- For cooling and heating water with or without antifreeze.
- Suitable for installation in masonry and plasterboard constructions (**minimum thickness 100 mm**).

### TECHNICAL DATA

Temperature	+5 °C ÷ +95 °C
Pressure	PN 10 (10 bar)
Connections	Fastec
Reference standards	DIN EN 13828 W570-1 KTW-BWGL ACS PZH



### FEATURES

- **Compact flush-mounting domestic water manifold kit with general shut-off function.**
- DN15 "Top Entry" valve with full flow, removable ball and "Soft Turn" anti-jamming technology, even after long periods of inactivity without the need for periodic activation.
- **Pre-assembled in a serviceable sandwich box** with knock-outs on the sides.
- **Design faceplate**, small with magnetic closure and a range of available finishes.
- Fast system connections **FASTEC®**
- Inlets and outlets expandable by using FASTEC TWIN fittings.



**K4.2 DOMESTIC WATER MANIFOLD KIT WITH FLUSH-MOUNTING MAIN SHUT-OFF VALVE**



**K4.2 domestic water manifold kit with flush-mounting main shut-off valve**



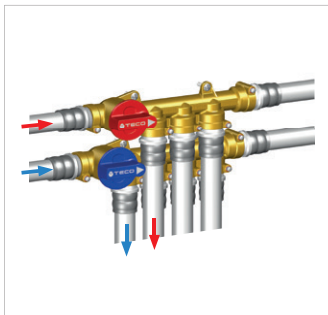
**Includes:**

- 2 Manifolds with general shut-off on the hot and cold inlets
- Box 260 x 180 x 85 mm
- Fixing bracket
- Site protection cover



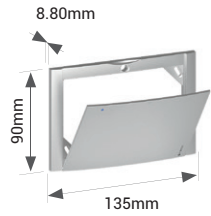
**Does not include:**

- Cover door **B03**
- Fastec fittings (page 38)



Kit code	Outlets cold	Outlets hot	DN	Connections	Pack
				FASTEC®	
K402BF10100	5	4	DN15	<b>F13</b>	5
<a href="#">See page 38</a>					

**B03 Faceplate with magnetic closure for K4.2**



**Includes:**

- Fixing screws

Code	Finish	Pack
KPLB0301600	White	10
KPLB0301M00	Polished chrome	5
KPLB0301800	Silver	5
KPLB0301A00	Black Soft Touch	5

**Spare parts for K4.2**

See page 165, or visit the website for all product information.





**FASTEC ADAPTERS AND FITTINGS**

**K4.2 DOMESTIC WATER MANIFOLD KIT WITH FLUSH-MOUNTING MAIN SHUT-OFF VALVE**



**Fastec adapters and fittings for K4.2**

**Fastec Fittings**

	Code	Description	Pack
	RF12210200	F13 90° F / F	10
	RF12210100	F13 90° M / F	10
	KA00F10001	Dual joint Twin F13 F / F / M	5
	KA00K00002	F13 Plug M	20
	RF12110400	F13 M L. 25 mm	10
	RF12110500	F13 M L. 50 mm	10
	RF12110600	F13 M L. 75 mm	8

**Threaded fittings**

	Code	Description	Pack
	KA00K00003	F13 M x R 1/2"	10
	KA00K00013	F13 M x R 3/4"	10
	RF12101000	F13 M x Rp 1/2"	10
	RF12111000	F13 M x Rp 3/4"	10

R (male) and Rp (female) threaded connections in accordance with EN 10226-1 and G threaded connections in accordance with ISO 228-1.

**Fittings for PEX pipes**

	Code	Pipe Ø x Thickness	Pack
	RF12100100	F13 M 16 x 1.8	10
	RF12100200	F13 M 20 x 1.5	10
	RF12100300	F13 M 25 x 2.3	5
	RF13M1210301	F13 M 12 x 1.1	10
	RF13M1610301	F13 M 16 x 1.5	10
	RF13M2010301	F13 M 20 x 1.9	10
	RF13M1210401	F13 M 12 x 1.1	10
	RF13M1610401	F13 M 16 x 1.5	10
	RF13M2010401	F13 M 20 x 1.9	10

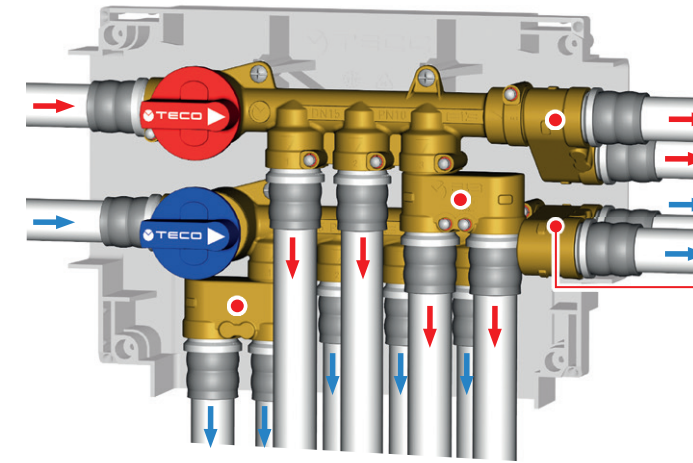
**Fittings for multi-layer pipes**

	Code	Pipe Ø x Thickness	Pack
	RF13M16101VA	F13 M 16 x 2.0	10
	RF13M16102VA	F13 M 16 x 2.25	10
	RF13M20101VA	F13 M 20 x 2.0	10
	RF13M20102VA	F13 M 20 x 2.5	10
	RF13M26101VA	F13 M 26 x 3.0	5
	511115MP	F13 M 16 x 2.0	5
	511116MP	F13 M 16 x 2.25	5
	511118MP	F13 M 20 x 2.0	5
	511119MP	F13 M 20 x 2.25	5
	511120MP	F13 M 20 x 2.5	5
	511121MP	F13 M 25 x 2.5	5
	511122MP	F13 M 26 x 3.0	5
	1651039	F13 M 16 x 2.0	10
	1651040	F13 M 20 x 2.0	10
	1651041	F13 M 26 x 3.0	5
	39342	F13 M 16 x 2.0	10
	39344	F13 M 20 x 2.0	10

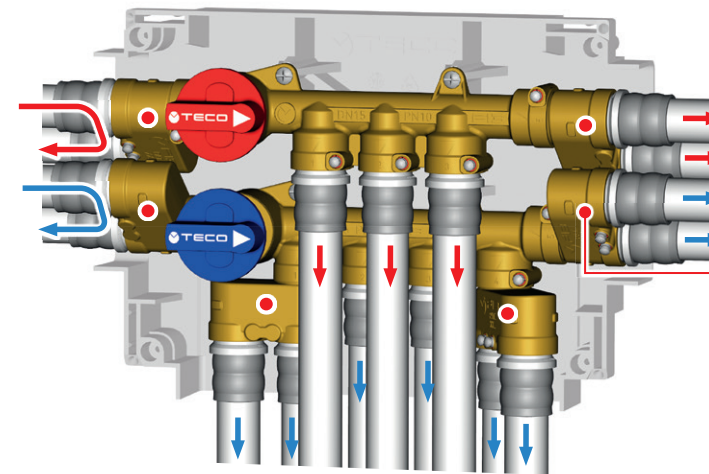
**F13 Fittings with FASTEC connection available in manufacturers' catalogues**

COMISA PRESS	HENCO	APE raccorderie AP SERIES	
Pipe Ø 16-20	Pipe Ø 16-20-26	Pipe Ø 16-20-26	
+GF+ ALUPEX EXPRESS	+GF+ JRG SANIPEX MT	TECE LOGO	TECE FLEX
Pipe Ø 16-20	Pipe Ø 16-20	Pipe Ø 20	Pipe Ø 16-20-25

**Fastec application examples**



The Fastec Twin fitting (KA00F10001) allows up to 7 cold and 6 hot outlets.

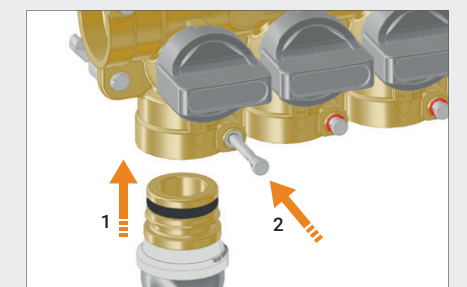


The addition of Fastec Twin fittings (KA00F10001) at the inlet can be used for circuit recirculation or as a branch for another environment; if used at the outlet, a manifold with 8 cold and 5 hot outlets can be obtained.

**FASTEC® THE FAST AND SECURE PLUMBING CONNECTION**

Plumbing connection with pin locking (page 6).

**F13 DN 15** Equivalent to 1/2"



1. Insert the fitting with the pin raised.
2. Lower the locking pin to complete the connection.



# FLUSH-MOUNTING METER KIT WITH SHUT-OFF VALVES

## K4CC

- COMPACT
- PRACTICAL TO INSTALL
- "SOFT TURN" ANTI-JAMMING TECHNOLOGY
- "TOP ENTRY" REMOVABLE BALL

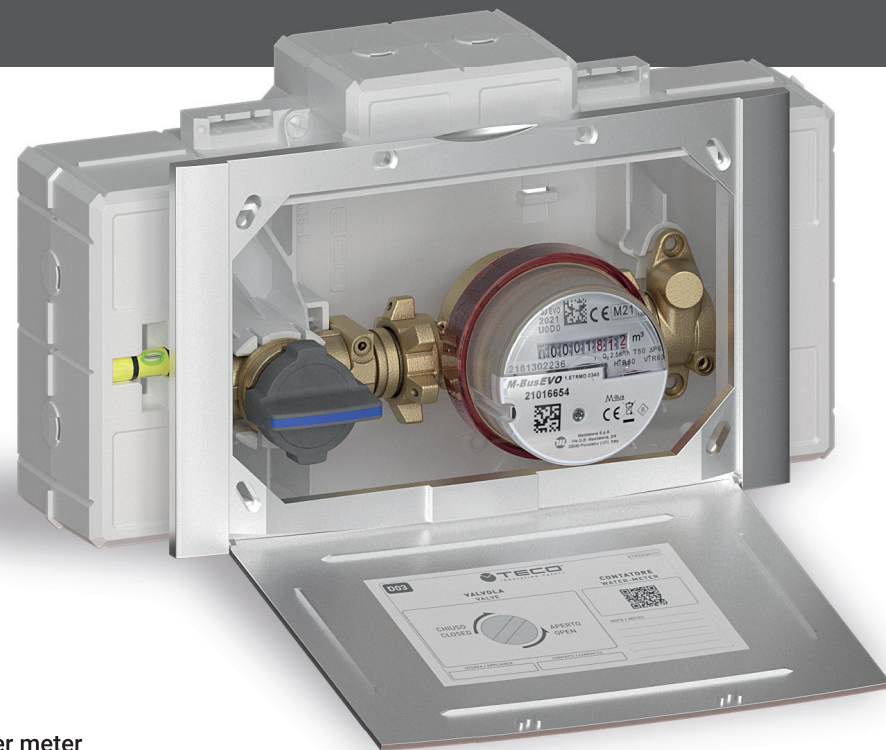


FIND OUT MORE



K4CC "DUO"  
With double meter and €100 electric actuator

WITH OPTIONAL MOTOR



K4CC "MONO"  
With single water meter

### APPLICATIONS

- For hot and cold drinking water.
- For measuring and monitoring submetering consumption.
- Suitable for installation in masonry and plasterboard constructions (minimum thickness 100 mm).

### TECHNICAL DATA

Temperature	+5 °C ÷ +90 °C
Pressure	PN 10 (10 bar)
Connections	Fastec
	DIN EN 13828 W570-1
Reference standards	KTW-BWGL ACS PZH

### FEATURES

- Flush-mounting metering kit with shut-off valves.
- DN15 "Top Entry" valve with full flow, removable ball and "Soft Turn" anti-jamming technology, even after long periods of inactivity without the need for periodic activation.
- Valve with optional €100 electric actuator.
- For volumetric meters,  $Q_3$  2.5 m<sup>3</sup>/h max.
- Pre-assembled in a serviceable sandwich box with knock-outs on all four sides.
- Design faceplate with magnetic closure, available in a range of finishes.
- Plumbing connection with FASTEC® quick coupling
- Available with one or two pre-assembled volumetric meters, or alternatively with connection joint.
- Radio or cable communication modules (M-BUS or LoRaWan) available for remote metering.

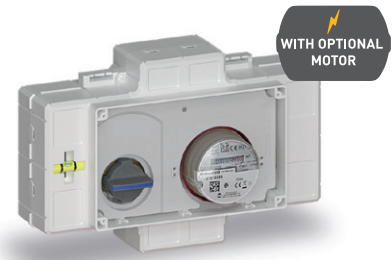




K4CC FLUSH-MOUNTED METER KIT WITH SHUT-OFF VALVES



K4CC "MONO" flush-mounting metering kit with single volumetric meter



**Includes:**

- 1 valve with removable ball and control lever for optional motor
- **Non-return valve in the outlet fitting**
- Box 280 x 186 x 69 mm
- Volumetric meter, Q<sub>3</sub> 2.5 m<sup>3</sup> / h
- Fixing bracket
- Site protection cover

**Does not include:**

- Cover flap **D03** (see below)
- Fastec fittings (page 44)
- €100 electric actuator (page 46)
- Communication modules (page 47)

Kit code	DN	Connections	Meter	Pack
		FASTEC®		
K4CCDF10100	DN15	<b>F13</b>	Q <sub>3</sub> m <sup>3</sup> / h. 2,5 - L. 80	5

[See page 44](#)

- i** • Optionally available with EVO M-Bus wireless radio meter module.  
• Versions without non-return valve available on request.

K4CC "DUO" flush-mounting metering kit with two volumetric meters



**Includes:**

- 2 valves with removable ball and control knob for optional motor
- **Non-return valves in the outlet fittings**
- Box 310 x 210 x 85 mm
- 2 meters, Q<sub>3</sub> 2.5 m<sup>3</sup> / h
- Fixing bracket
- Site protection cover

**Does not include:**

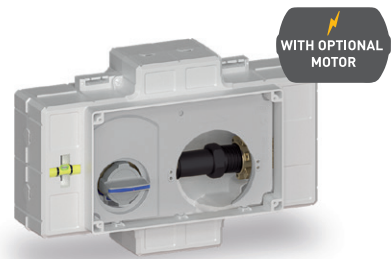
- Cover flap **E03** (see below)
- Fastec fittings (page 44)
- €100 electric actuator (page 46)
- Communication modules (page 47)

Kit code	DN	Connections	Meter (x2)	Pack
		FASTEC®		
K4CCEF10100	DN15	<b>F13</b>	Q <sub>3</sub> m <sup>3</sup> / h. 2,5 - L. 80	5

[See page 44](#)

- i** • Optionally available with EVO M-Bus wireless radio meter module.  
• Versions without non-return valve available on request.

K4CC "MONO" flush-mounting metering kit with joint



**Includes:**

- 1 valve with removable ball and control lever for optional motor
- **Non-return valve in the outlet fitting**
- Box 280 x 186 x 69 mm
- Joint L. 80 mm
- Fixing bracket
- Site protection cover

**Does not include:**

- Cover flap **D03** (see below)
- Fastec fittings (page 44)
- €100 electric actuator (page 46)

Kit code	DN	Connections	Joint	Pack
		FASTEC®		
K4CCDF10200	DN15	<b>F13</b>	Ø3/4" - L. 80 mm	5

[See page 44](#)

- i** Versions without non-return valve available on request.

K4CC "DUO" flush-mounting metering kit with joints



**Includes:**

- 2 valves with removable ball and control knob for optional motor
- **Non-return valves in the outlet fittings**
- Box 310 x 210 x 85 mm
- Joints L. 80/110 mm
- Fixing bracket
- Site protection cover

**Does not include:**

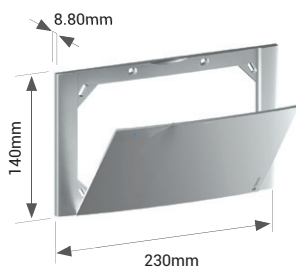
- Cover flap **E03** (see below)
- Fastec fittings (page 44)
- €100 electric actuator (page 46)

Kit code	DN	Connections	Joint (x2)	Pack
		FASTEC®		
K4CCEF10200	DN15	<b>F13</b>	Ø3/4" - L. 80 mm	5
K4CCEF10300	DN15	<b>F13</b>	Ø3/4" - L. 110 mm	5

[See page 44](#)

- i** Versions without non-return valve available on request.

**D03** Faceplate with magnetic closure for K4CC "MONO"

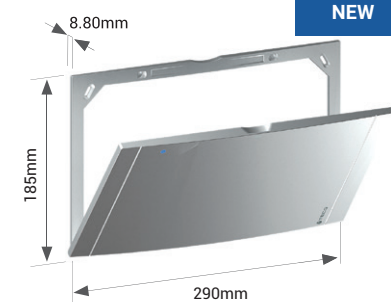


**Includes:**

- Fixing screws

Code	Finish	Pack
KPLD0301600	White	5
KPLD0301M00	Polished chrome	1
KPLD0301800	Silver	1
KPLD0301A00	Black Soft Touch	1

**E03** Faceplate with magnetic closure for K4CC "DUO"



**Includes:**

- Fixing screws

Code	Finish	Pack
KPLE0301600	White	5
KPLE0301M00	Polished chrome	1
KPLE0301800	Silver	1
KPLE0301A00	Black Soft Touch	1







**FASTEC ADAPTERS AND FITTINGS**  
FOR K4CC FLUSH-MOUNTED METER KIT WITH SHUT-OFF VALVES





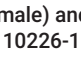
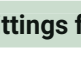


**Fastec adapters and fittings for K4CC "MONO" and K4CC "DUO"**

**Fastec Fittings**










	Code	Description	Pack
	RF12210100	F13 90° M / F	10
	RF12310100	F13 T M / F / F	5
	KA00F10001	Dual joint Twin F13 F / F / M	5
	KA00K00002	F13 Plug M	20

**Threaded fittings**















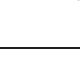
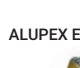

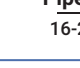

	Code	Description	Pack
	KA00K00003	F13 M x R 1/2"	10
	KA00K00013	F13 M x R 3/4"	10
	RF12101000	F13 M x Rp 1/2"	10
	RF12111000	F13 M x Rp 3/4"	10
	RF122F0100	F13 M 90° x R 1/2"	10
	RF122F0200	F13 M 90° x Rp 1/2"	10

R (male) and Rp (female) threaded connections in accordance with EN 10226-1 and G threaded connections in accordance with ISO 228-1.








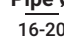

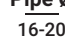

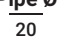

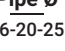
**Fittings for PEX pipes**

	Code	Pipe Ø x Thickness	Pack
	RF12100100	F13 M 16 x 1.8	10
	RF12100200	F13 M 20 x 1.5	10
	RF12100300	F13 M 25 x 2.3	5
	RF13M1210301	F13 M 12 x 1.1	10
	RF13M1610301	F13 M 16 x 1.5	10
	RF13M2010301	F13 M 20 x 1.9	10
	RF13M1210401	F13 M 12 x 1.1	10
	RF13M1610401	F13 M 16 x 1.5	10
	RF13M2010401	F13 M 20 x 1.9	10

**Fittings for multi-layer pipes**

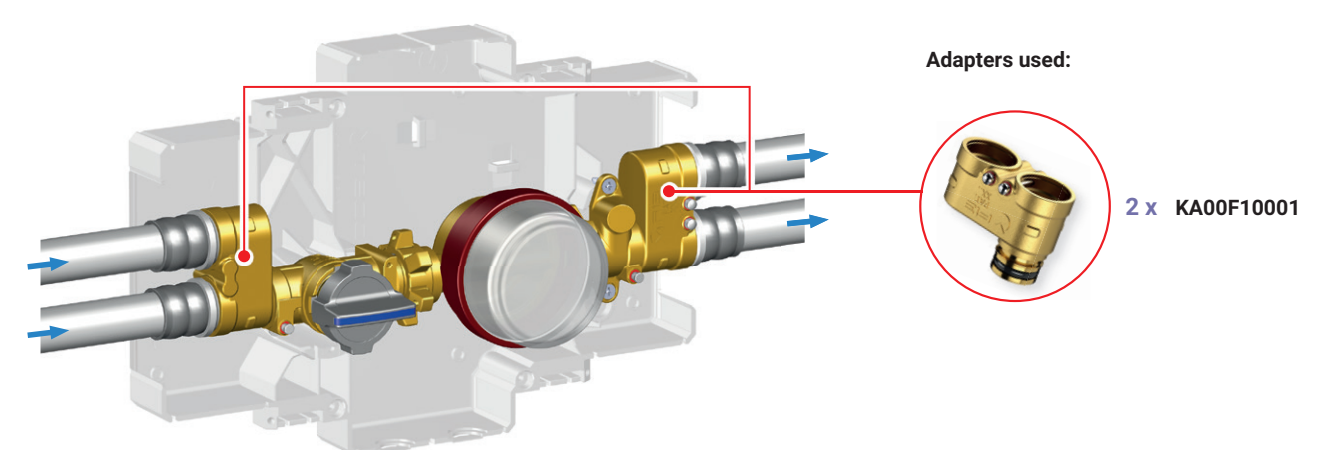
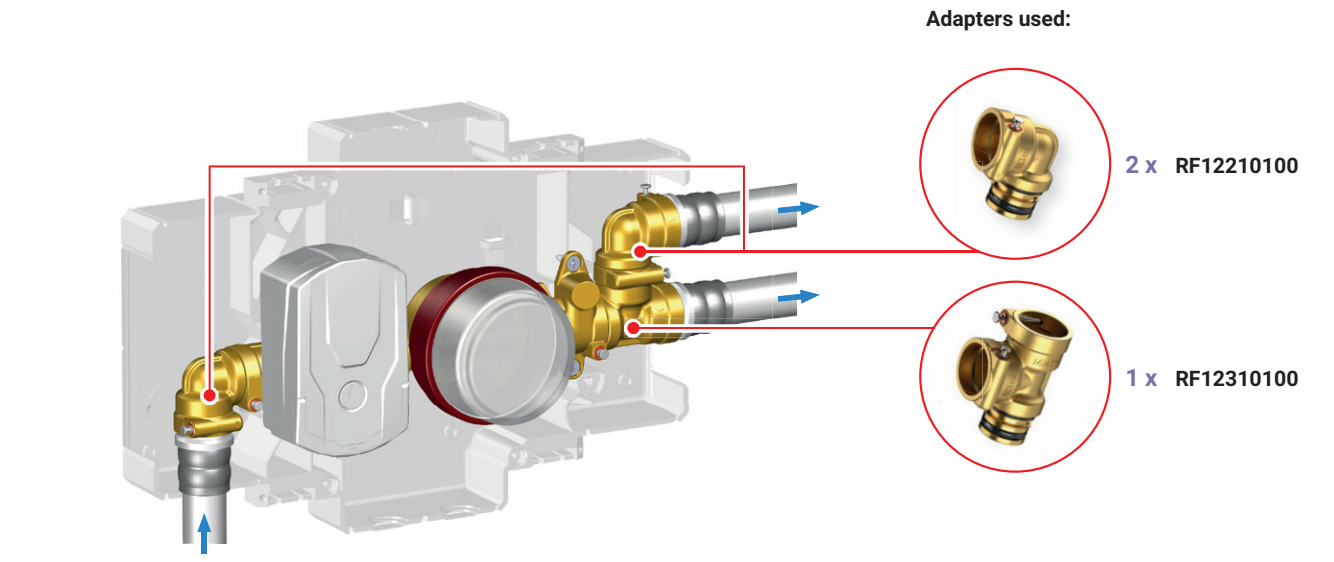
	Code	Pipe Ø x Thickness	Pack
	RF13M16101VA	F13 M 16 x 2.0	10
	RF13M16102VA	F13 M 16 x 2.25	10
	RF13M20101VA	F13 M 20 x 2.0	10
	RF13M20102VA	F13 M 20 x 2.5	10
	RF13M26101VA	F13 M 26 x 3.0	5
	RF14M26101VA	F14 M 26 x 3.0	5
	RF14M32101VA	F14 M 32 x 3.0	5
	511115MP	F13 M 16 x 2.0	5
	511116MP	F13 M 16 x 2.25	5
	511118MP	F13 M 20 x 2.0	5
	511119MP	F13 M 20 x 2.25	5
	511120MP	F13 M 20 x 2.5	5
	511121MP	F13 M 25 x 2.5	5
	511122MP	F13 M 26 x 3.0	5
	1651039	F13 M 16 x 2.0	10
	1651040	F13 M 20 x 2.0	10
	1651041	F13 M 26 x 3.0	5
	39342	F13 M 16 x 2.0	10
	39344	F13 M 20 x 2.0	10

**F13 Fittings with FASTEC connection available in manufacturers' catalogues**

 COMISA PRESS  Pipe Ø 16-20	 HENCO  Pipe Ø 16-20-26	 APE raccorderie AP SERIES  Pipe Ø 16-20-26	
 +GF+ ALUPEX EXPRESS  Pipe Ø 16-20	 +GF+ JRG SANIPEX MT  Pipe Ø 16-20	 TECE LOGO  Pipe Ø 20	 TECE FLEX  Pipe Ø 16-20-25

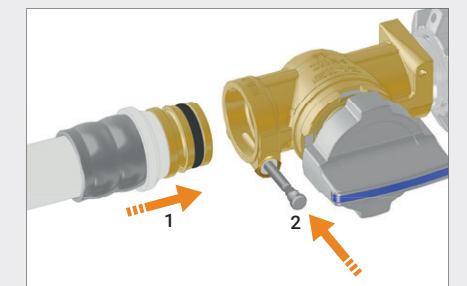
**Fastec application examples**

Compositions that can be made with products from the Fastec range: **adapters and fittings for multi-layer pipe** (see opposite page).



**FASTEC®**  
THE FAST AND SECURE PLUMBING CONNECTION

Plumbing connection with pin locking (page 6).



**F13 DN 15** Equivalent to 1/2"

1. Insert the fitting with the pin raised.
2. Lower the locking pin to complete the connection.





**€100 ON/OFF ELECTRIC ACTUATOR**  
FOR K4CC FLUSH-MOUNTED METER KIT WITH SHUT-OFF VALVES

**€100 ON/OFF electric actuator**



**Includes:**

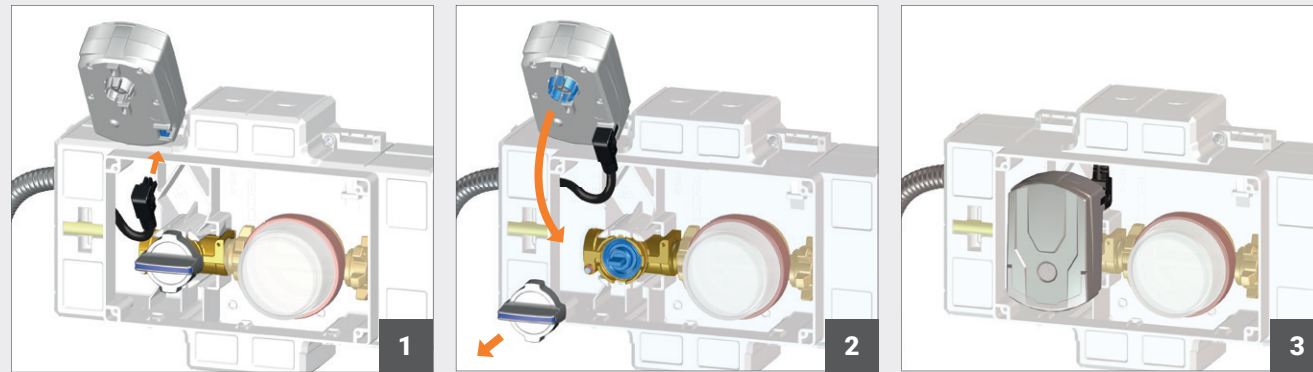
- €100 ON/OFF electric actuator
- 1.25 m cable with Molex Micro-Fit connector

Code	Voltage	Auxiliary microswitch position	Pack
E1045100	AC 110 ÷ 230 V 50-60 Hz	With valve closed	1
E1046100	AC/DC 24 V 50-60 Hz		

**INSTALLATION EXAMPLE OF €100 ELECTRIC ACTUATOR**



Once the electrical connection has been made, the valve can be motorised using the €100 electric actuator, optimised by TECO in terms of size, low consumption and quietness.



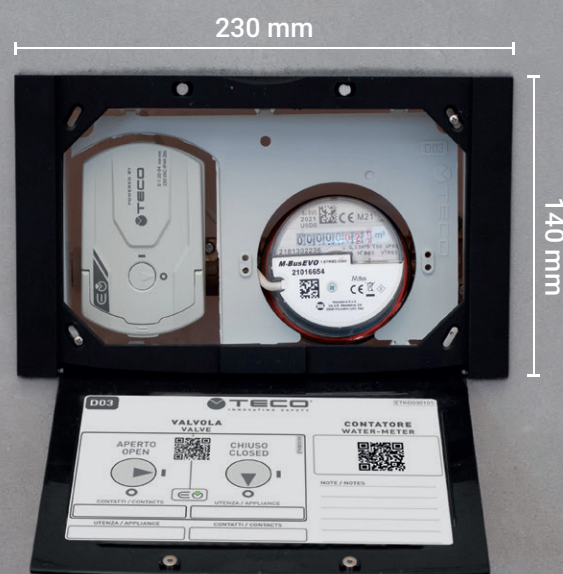
1 Insert the cable provided with the connector into the €100 electric actuator.

2 Remove the handle and insert the €100 electric actuator into the valve seat with light pressure.

3 €100 electric actuator installed and ready to operate.

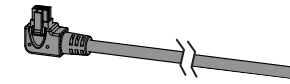
[i](#) See page 96

Minimum wall thickness 100 mm



**ACCESSORIES**  
FOR K4CC FLUSH-MOUNTED METER KIT WITH SHUT-OFF VALVES

**Optional 3 metre cable for €100 electric actuator**



Code	Description	Pack
KA00K00014	Kit of 6P X 3M cable + Micro-Fit connector	1

**Communication modules for remote meter reading**

The volumetric meter can be equipped with communication modules for remote metering.



Code	Description	Pack
KA00CC0001	EVO 868 MHz LoRaWAN Radio Module	1
KA00CC0002	EVO 868 MHz Wireless M-Bus Radio Module	1
KA00CC0003	M-Bus EVO module	1
KA00CC0004	Pulse Evo module	1

**Volumetric meter**



Code	Description	DN.	Pack
KA00CC0005	SJ EVO meter - Q <sub>3</sub> m <sup>3</sup> / h. 2.5 - L. 80 - G 3/4"	15	1

**Spare parts for K4CC "MONO" and K4CC "DUO"**

See page 166, or visit the website for all product information.

