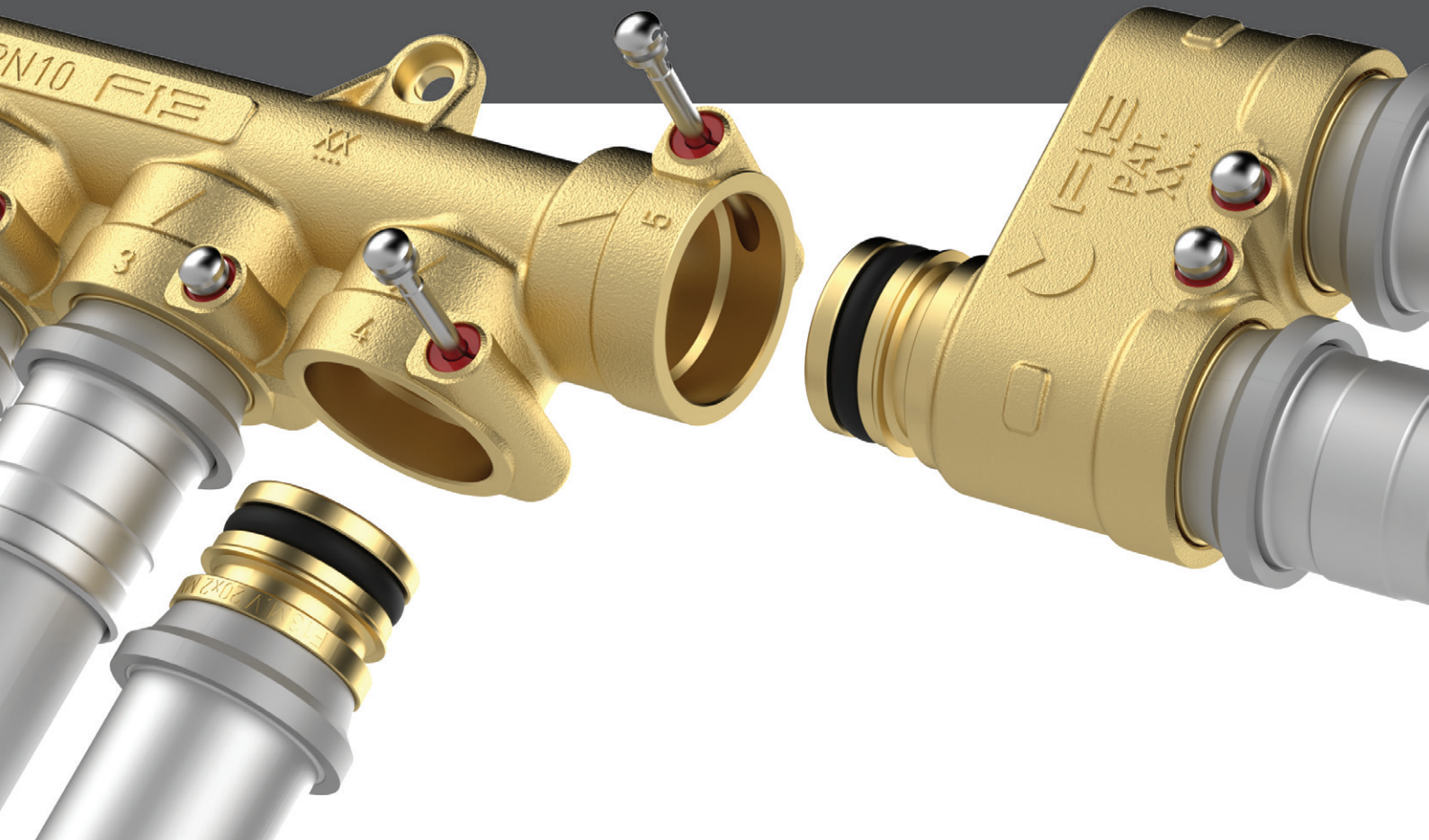


FASTEC®

FAST AND SECURE PLUMBING CONNECTION



FIND OUT MORE



APPLICATIONS

- For hot and cold drinking water.
- For cooling and heating water with or without antifreeze.
- For external and concealed installations.

FEATURES

- **Quick and safe connection without tools.**
- Unbeatable in tight spaces.
- Sealing ensured by O-ring with static (controlled) predefined compression.
- **Reliability certified** by millions of fittings installed worldwide, both visible and concealed.
- **Wide range of fittings, adapters and valves** to suit many system solutions.
- Rotatable.
- Non-removable fixing pin.

TECHNICAL DATA

Temperature	+5 °C ÷ +95 °C
Max. operating pressure of the connection	16 bar
Reference standards	KTW-BWGL ACS PZH



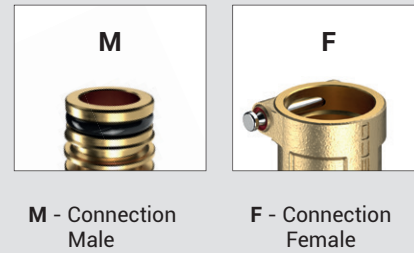


Fastec Store

HOW TO CHOOSE FASTEC?

COMPARISON TABLE			
CONNECTIONS FASTEC®	TRADITIONAL CONNECTIONS		
	DN	INCHES	MULTILAYER / PEX PIPE
F13	15	1/2"	Ø 12 - 16 - 20 - 25 - 26
F14	20	3/4"	Ø 26 - 32

The table shows the correspondence between Fastec connections and commonly used pipe and fitting diameters.



M - Connection Male

F - Connection Female

Fastec Fittings

Code	Description	Pack	Code	Description	Pack
RF12210200	F13 90° F / F	10	KA00F10001	Dual joint Twin F13 F / F / M	5
RF22220200	F14 90° F / F	10	KA00K00016	F13 Plug F	10
RF12210100	F13 90° M / F	10	KA00K00018	F14 Plug F	10
RF22220100	F14 90° M / F	10	KA00K00002	F13 Plug M	20
RF12310200	F13 T F / F / F	5	KA00K00010	F14 Plug M	10
RF22320200	F14 T F / F / F	5	RF12101100	Reducer from F14 F → F13 M	10
RF12310100	F13 T M / F / F	5	RF12110400	F13 M L. 25 mm	10
RF22320100	F14 T M / F / F	5	RF12110500	F13 M L. 50 mm	10
RF12110200	Sleeve F13 F / F	10	RF12110600	F13 M L. 75 mm	8
RF22120100	Sleeve F14 F / F	10			
KA00K00008	F13 Nipple M / M	10			
KA00K00017	F14 Nipple M / M	10			

Threaded fittings

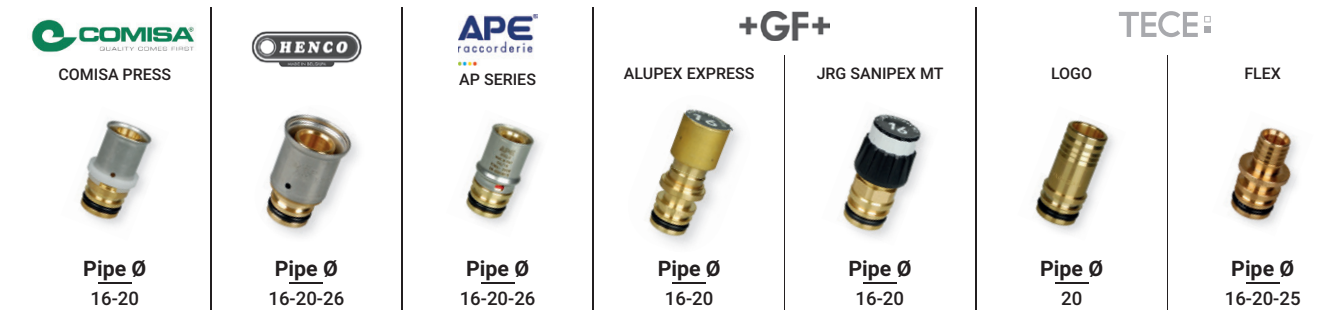
Code	Description	Pack
KA00K00003	F13 M x R 1/2"	10
KA00K00013	F13 M x R 3/4"	10
KA00K00009	F14 M x R 3/4"	10
KA00K00019	F14 M x R 1"	10
RF12101000	F13 M x Rp 1/2"	10
RF12111000	F13 M x Rp 3/4"	10
RF12120100	F14 M x Rp 3/4"	10
RF12120200	F14 M x Rp 1"	10
KA00K00004	EUROKONUS F13 M x EK 3/4"	10
RF122F0100	F13 M 90° x R 1/2"	10
RF122F0200	F13 M 90° x Rp 1/2"	10
RF12110900	SWIVEL NUT FLAT SEAL WITH O-RING F13 M x G 3/4"	10

R (male) and Rp (female) threaded connections in accordance with EN 10226-1 and G threaded connections in accordance with ISO 228-1.

Fittings for multi-layer pipes

Code	Pipe Ø x Thickness	Pack
RF13M16101VA	F13 M 16 x 2.0	10
RF13M16102VA	F13 M 16 x 2.25	10
RF13M20101VA	F13 M 20 x 2.0	10
RF13M20102VA	F13 M 20 x 2.5	10
RF13M26101VA	F13 M 26 x 3.0	5
RF14M26101VA	F14 M 26 x 3.0	5
RF14M32101VA	F14 M 32 x 3.0	5
511115MP	F13 M 16 x 2.0	5
511116MP	F13 M 16 x 2.25	5
511118MP	F13 M 20 x 2.0	5
511119MP	F13 M 20 x 2.25	5
511120MP	F13 M 20 x 2.5	5
511121MP	F13 M 25 x 2.5	5
511122MP	F13 M 26 x 3.0	5
1651039	F13 M 16 x 2.0	10
1651040	F13 M 20 x 2.0	10
1651041	F13 M 26 x 3.0	5
39342	F13 M 16 x 2.0	10
39344	F13 M 20 x 2.0	10

F13 Fittings with FASTEC connection available in manufacturers' catalogues





Fastec Store

Valves

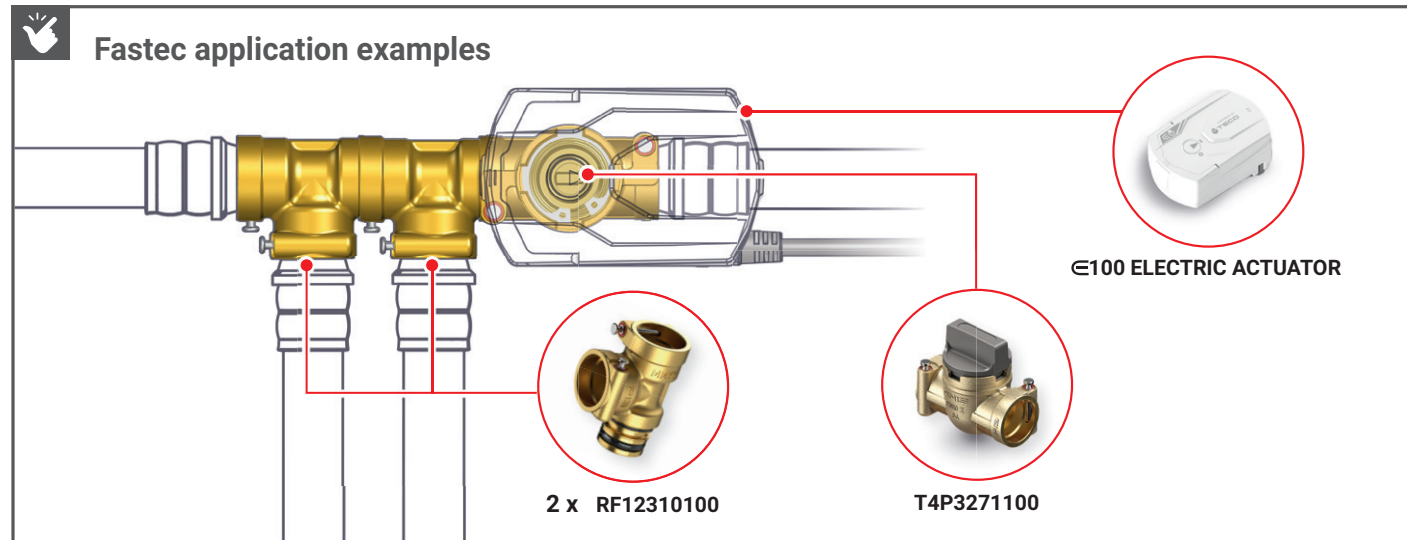
Code	DN	Description	Kv*	Pack
T4P12C2100	DN10	F13 F/F/M	4.0	5
T4P32C1100	DN15	F13 F/F/F	5.8	10
T4P32C2100	DN15	F13 F/F/M	5.8	10
T4P32C3100	DN15	F13 M/F/F	5.8	10
T4P3271100	DN15	F13 F/F	15	10
T4P4271100	DN20	F14 F/F	27	10
T4P3272100	DN15	F13 F/M	15	10

WITH OPTIONAL MOTOR

Fittings for PEX pipes

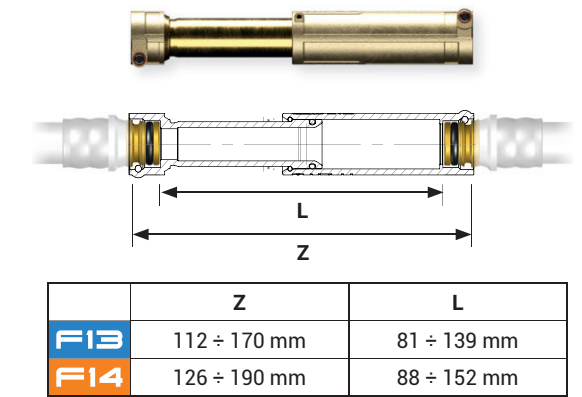
Code	Pipe Ø x Thickness	Pack
RF12100100	F13 M 16 x 1.8	10
RF12100200	F13 M 20 x 1.5	10
RF12100300	F13 M 25 x 2.3	5
RF13M1210301	F13 M 12 x 1.1	10
RF13M1610301	F13 M 16 x 1.5	10
RF13M2010301	F13 M 20 x 1.9	10
RF13M1210401	F13 M 12 x 1.1	10
RF13M1610401	F13 M 16 x 1.5	10
RF13M2010401	F13 M 20 x 1.9	10

* The coefficient Kv defines the water flow (in m³/h from 5 °C to 40 °C) through a valve with a differential pressure of 1 bar.



EXTENDER telescopic joint

Code	Description	Pack
RF12110300	EXTENDER telescopic joint F13 F/F	5
RF22120200	EXTENDER telescopic joint F14 F/F	5



EXTENDER application examples

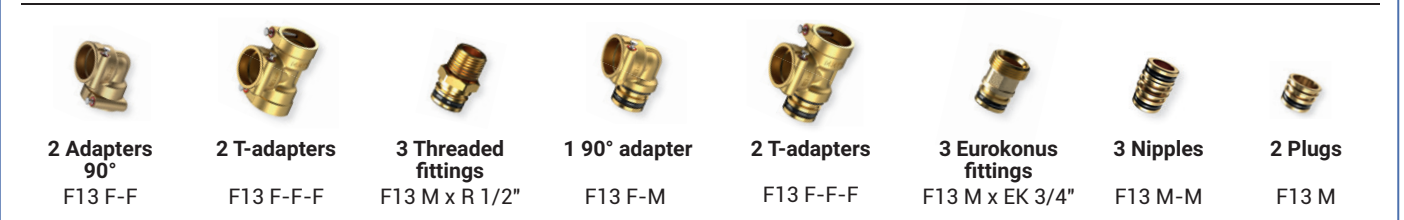


F13 Fastec case



Code	Description
MCC0240	Empty case
MCC0230	Ready-to-use case *

* Contents of the ready-to-use case

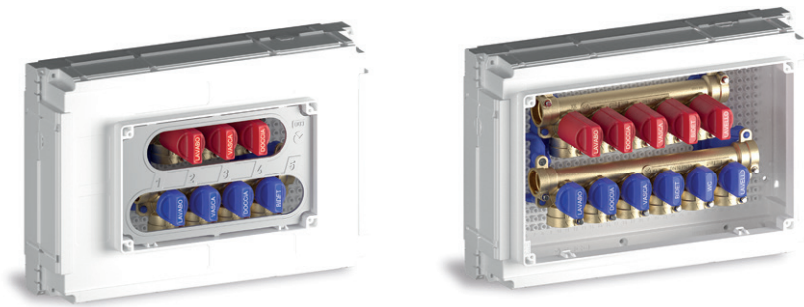




Product range with Fastec connection

Compact flush-mounting multiple shut-off domestic water manifold kit

See page 26



K4.3

Flush-mounting multiple shut-off domestic water manifold kit.

Compact domestic water manifold kit with flush-mounting main shut-off valve

See page 34



K4.2

Manifold kit with flush-mounting main shut-off.

Compact flush-mounting metering kit

See page 18



K4.0



K4 E

WITH OPTIONAL MOTOR

K4.0

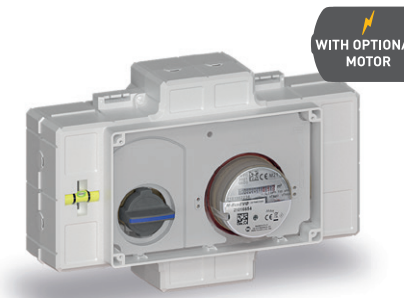
Dual shut-off valve.

K4 E

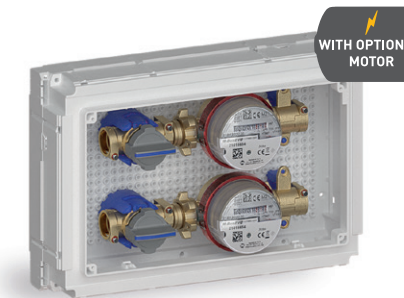
Valve with optional €100 electric actuator motor.

Flush-mounting meter kit with shut-off valve for optional motor

See page 40



K4CC "MONO"



K4CC "DUO"

WITH OPTIONAL MOTOR

WITH OPTIONAL MOTOR

K4CC MONO

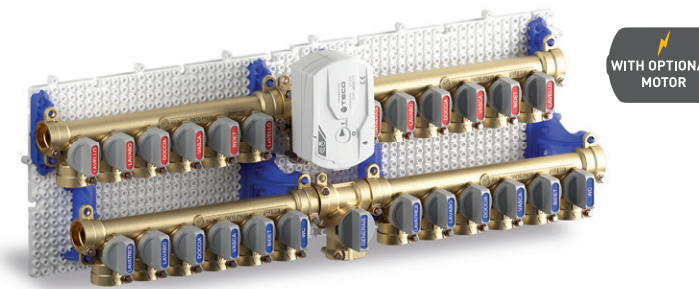
Flush-mounting metering kit with single volumetric meter or joint.

K4CC DUO

Flush-mounting metering kit with two volumetric meters or joints.

Modular compact distribution system

See page 48



WITH OPTIONAL MOTOR

K-BLOC
MODULAR SYSTEM

Modular compact distribution system.

Flush-mounting "Top Entry" ball valve

See page 72

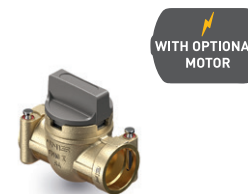


ULTRA

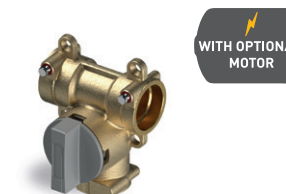
Fastec 'U' and straight valve.

"Top Entry" ball valves with optional motor

See page 82



T4 E Straight



T4 E T version

WITH OPTIONAL MOTOR

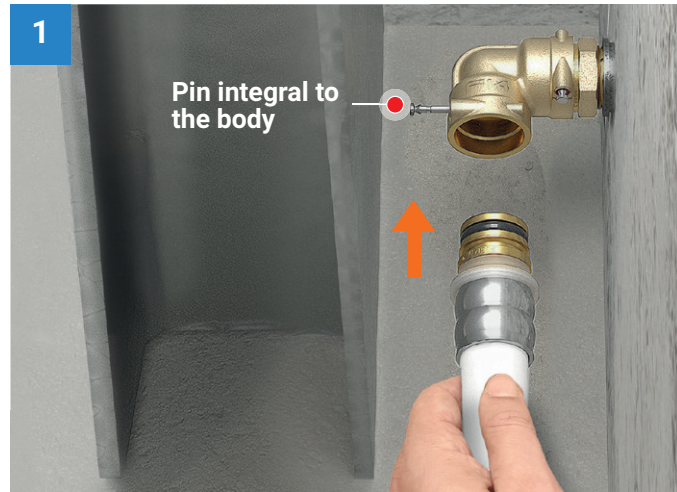
WITH OPTIONAL MOTOR

T4 E

"Top Entry" ball shut-off valves, Fastec version.

FASTEC
FAST AND SECURE PLUMBING CONNECTION

Simple and secure connection

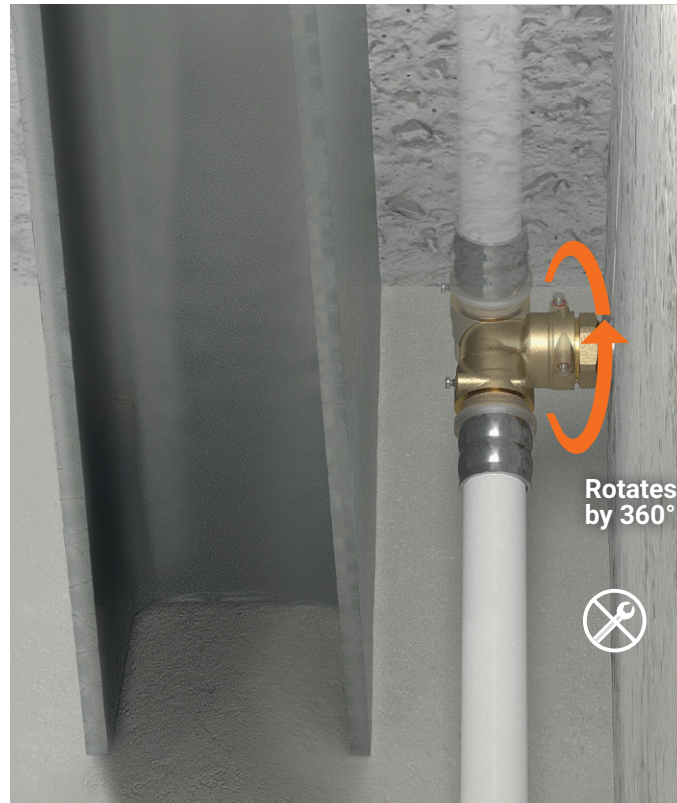


1 Inserting the fitting. The fixing pin integral with the valve or fitting body makes connection extremely easy and convenient.



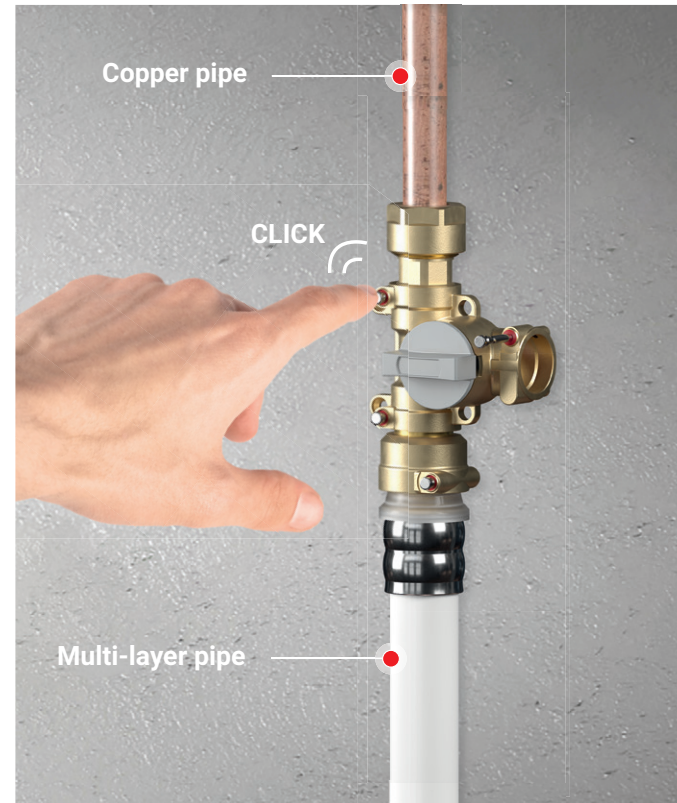
2 When the pin is lowered, a **CLICK** confirms that the connection has been made correctly. The pin can only be lowered if the fitting has been inserted correctly. With the system in operation (pressurised), the pin can no longer be pulled out.

Unbeatable in tight spaces



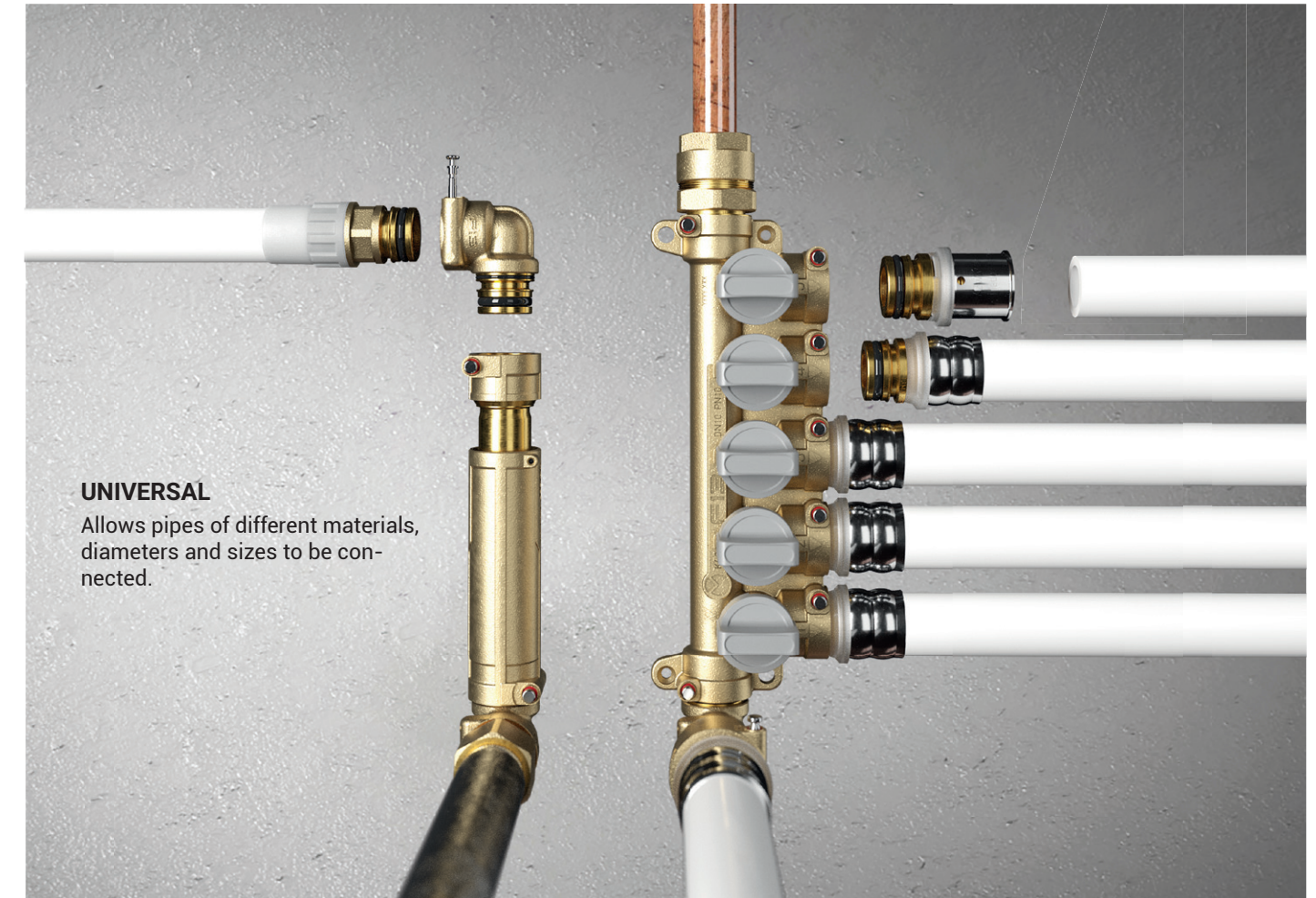
Fastec **fittings** can rotate 360° during installation. This helps when positioning the system, making the Fastec connection unbeatable in tight spaces. Once the system is in operation and pressurised, the fittings can no longer rotate.

Practical and versatile solution

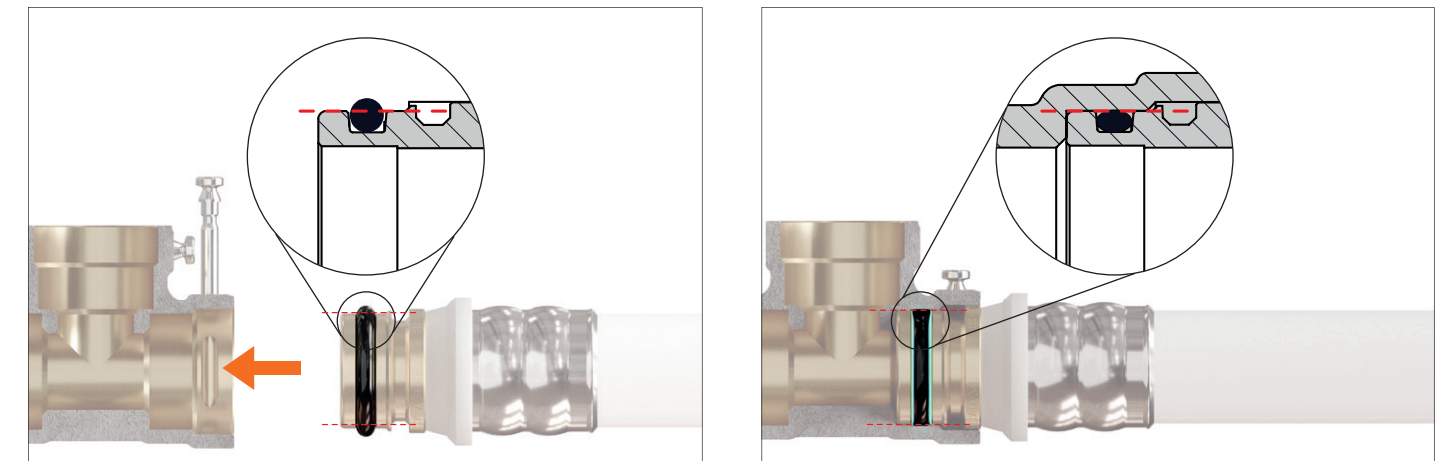


Fastec offers a practical and versatile solution to meet a range of installation requirements. Thanks to the available fittings in the range, pipes of different diameters and materials can be connected easily and efficiently without using tools.

Wide range of fittings



O-Ring dimensioned for a perfect seal



The **perfectly** dimensioned **O-ring** ensures a perfect seal for the entire service life of the system. The entire Fastec range is tested in accordance with **ISO 11346**, which simulates the equivalent of **50 years** of system operation.